

# Case Controversies (pelvis / acetabulum)

Saam Morshed

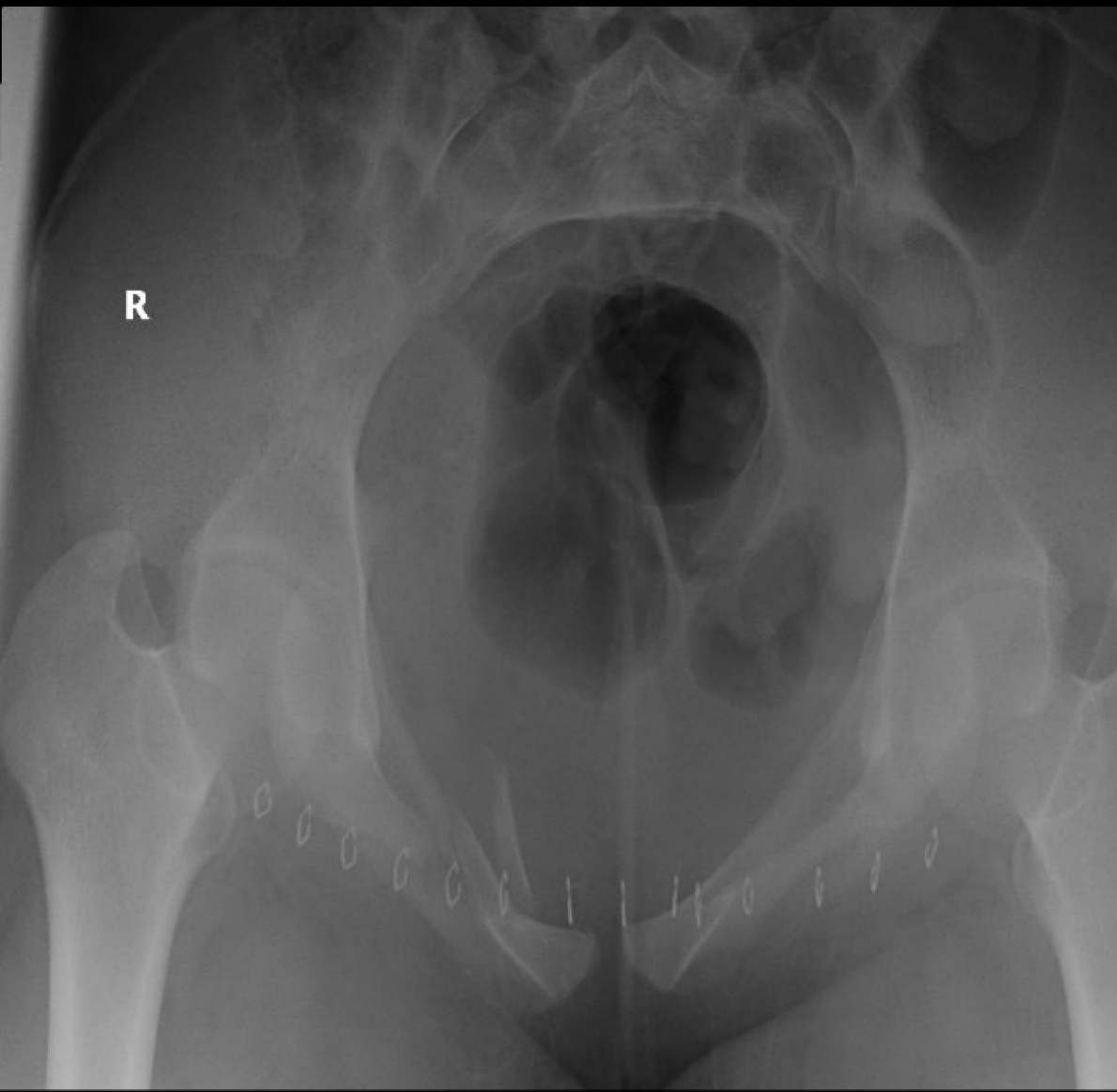
Professor in Residence

Orthopaedic Surgery, Epidemiology and Biostatistics

University of California, San Francisco

62 yo woman pedestrian struck by car





# Classify?

Do you need more information?

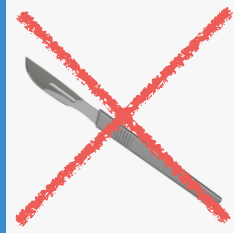


20  
83  
mm

Classify?

## Static

## Dynamic



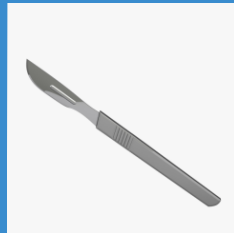
**LC1** - Incomplete Sacrum;  
Complete Sacrum < 1cm  
displacement **and** WB's

**APC1** - < 1cm displacement  
**and** WB's

**LC1** - Complete sacrum  
< 1cm

**LC2** - No displacement

**APC1** - <2.5cm  
displacement



**LC1** - Complete sacrum > 1cm  
displacement

**LC2** - Any displacement

**Any:** LC3, APC2/3, VS, CM, or  
AO/OTA 61C

**LC1** - Complete sacrum  
>1cm displacement

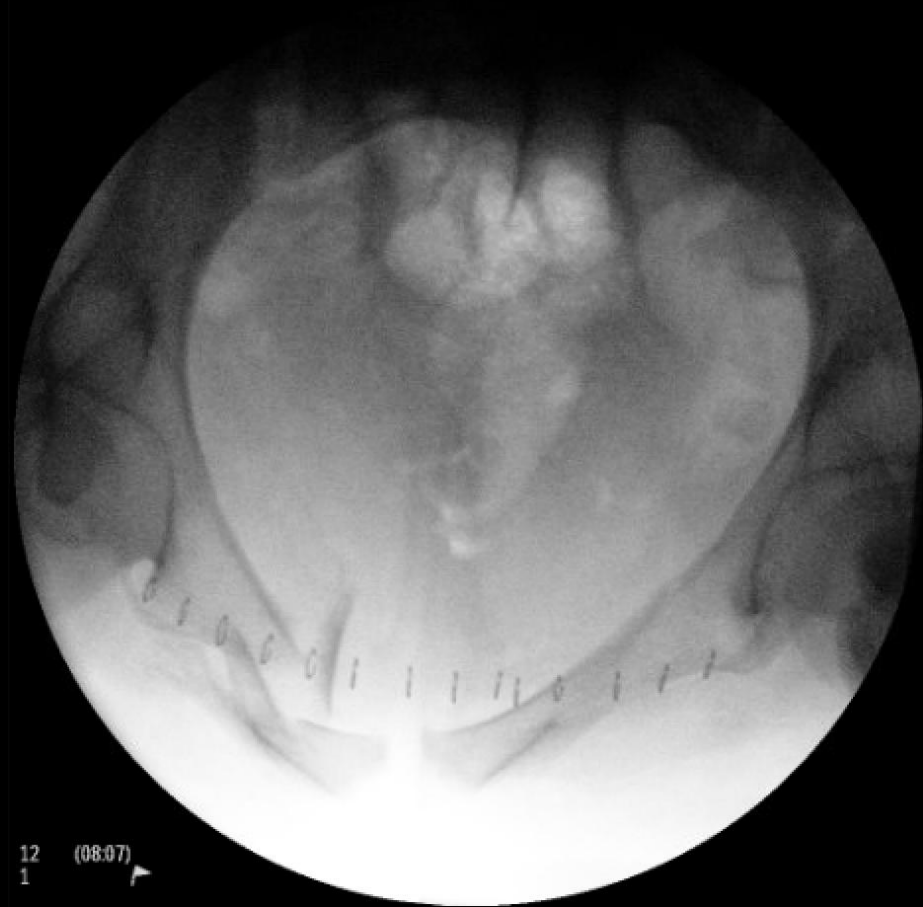
**LC2** - Any displacement

**APC2** - occult

Treatment?

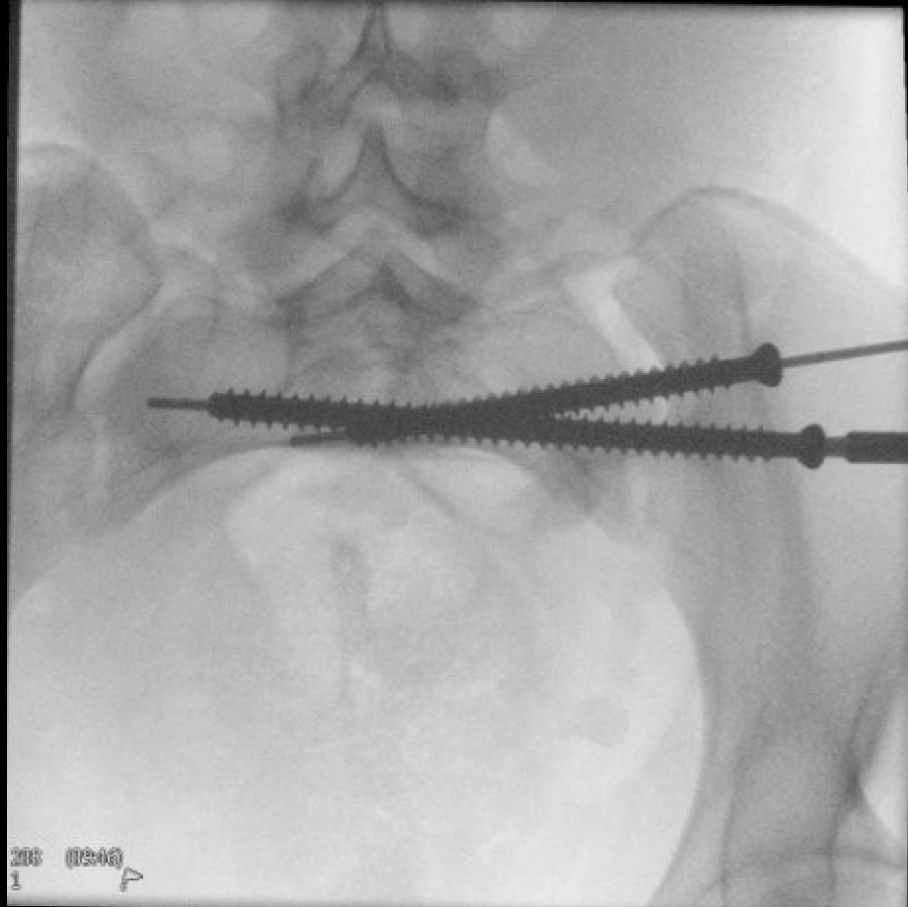


11 (08.07)  
1



12 (08:07)   
1

Fix?



Check it again?



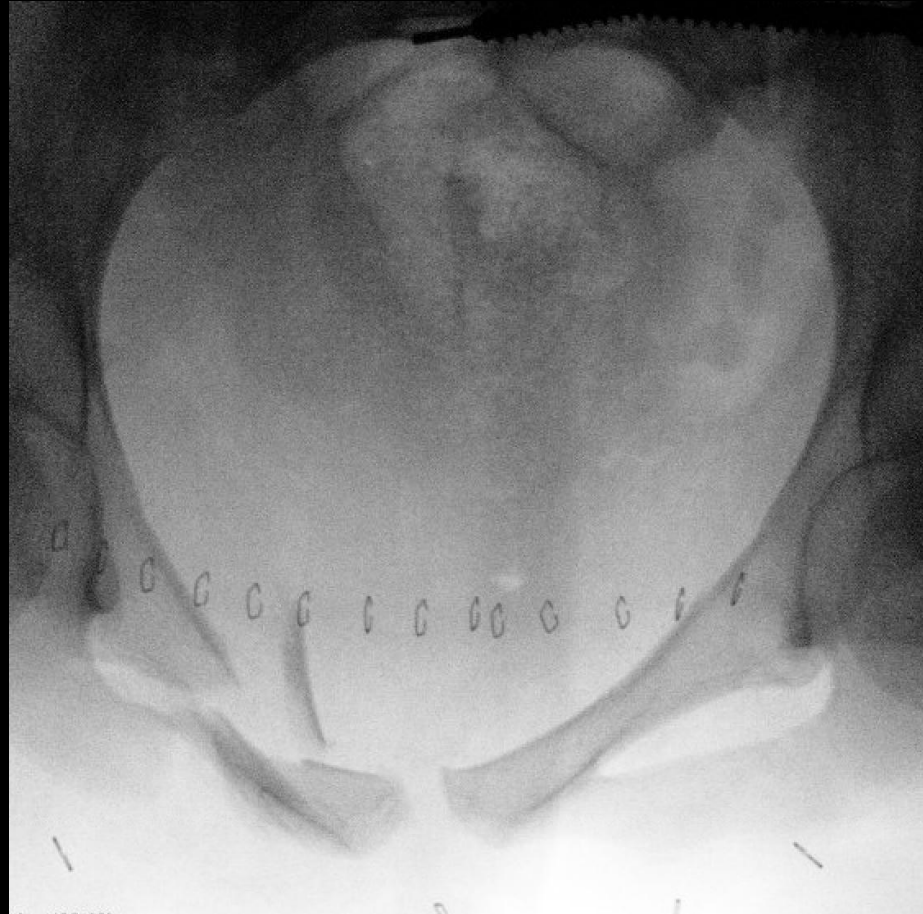
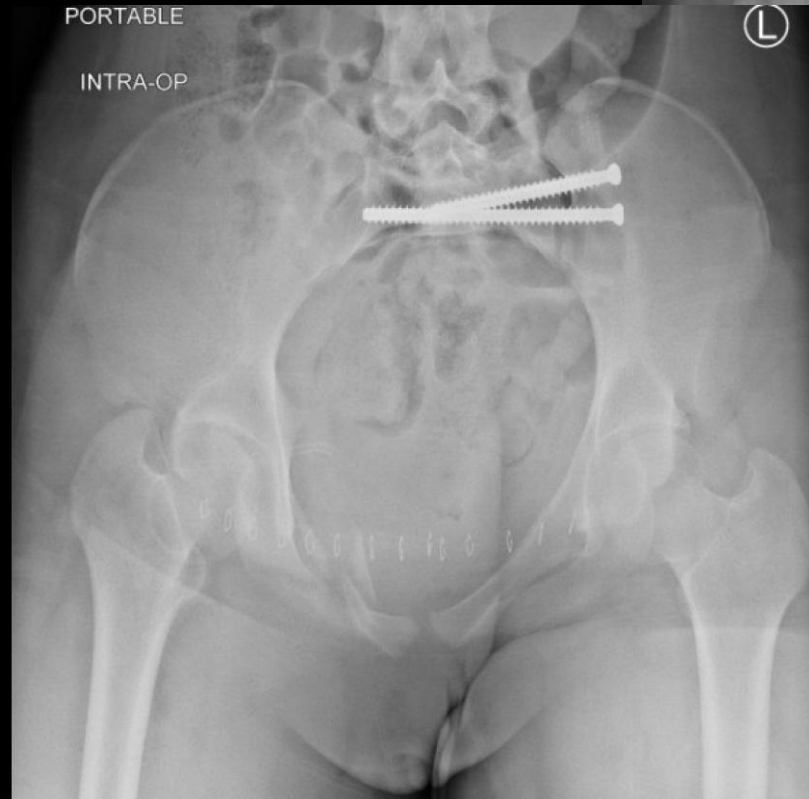




TABLE  
SUPINE  
-OP



PORTABLE  
INTRA-OP



INTRA-OP  
SUPINE  
PORTABLE



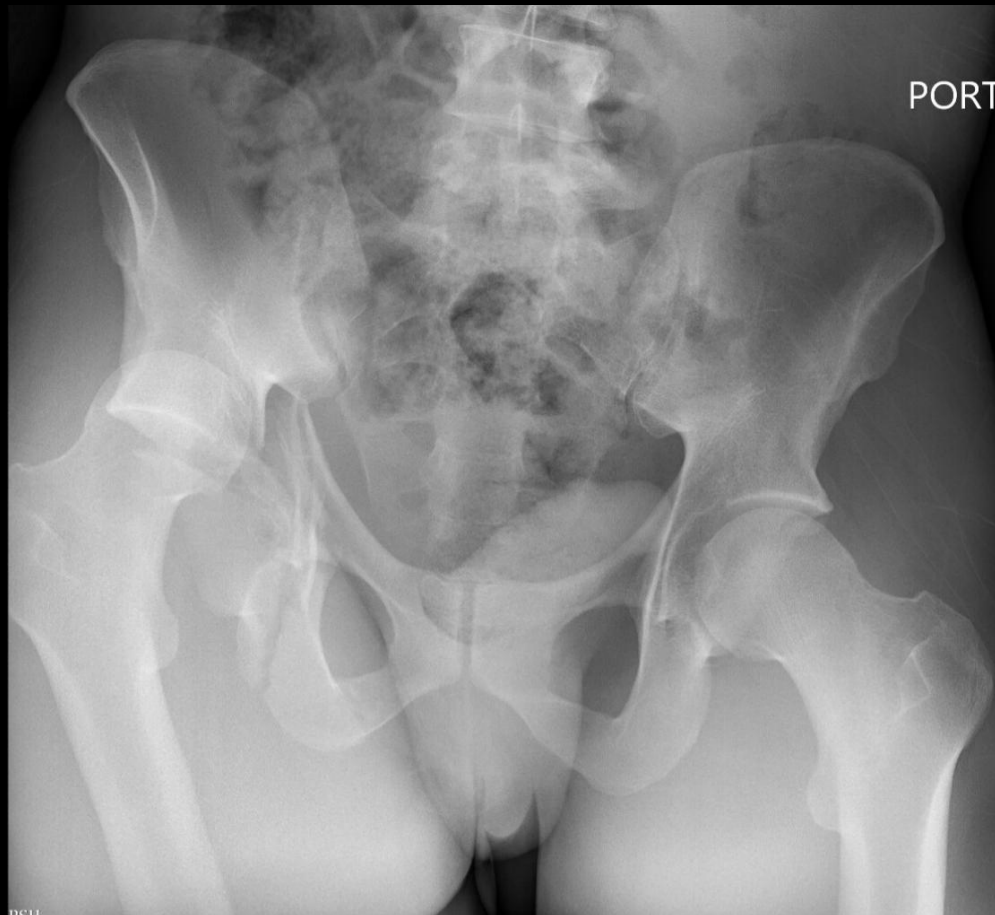
Improved pain and mobility

Slobogon *JOT* 2021

# For Discussion

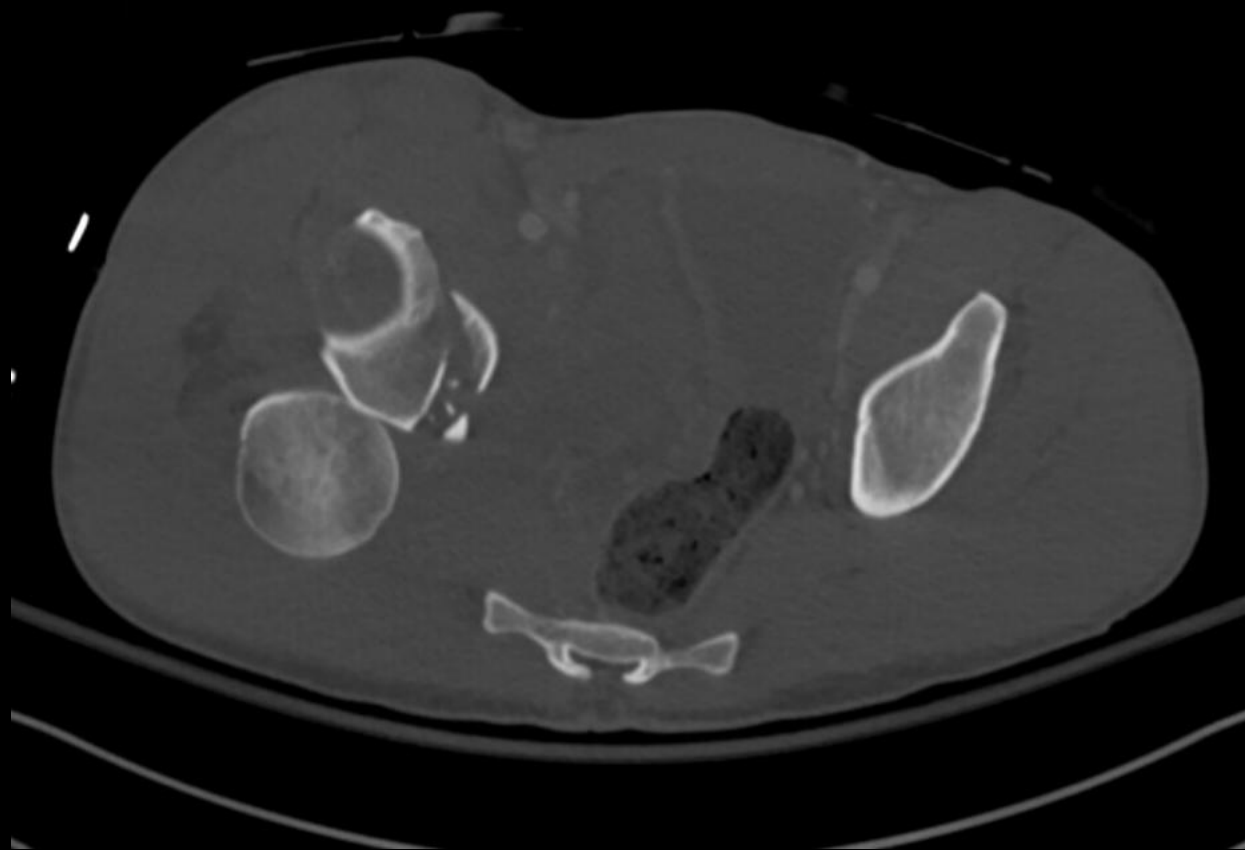
- Stable vs un-stable LC1
- Options for posterior stabilization
- When to supplement with anterior fixation
- Post-op regimens

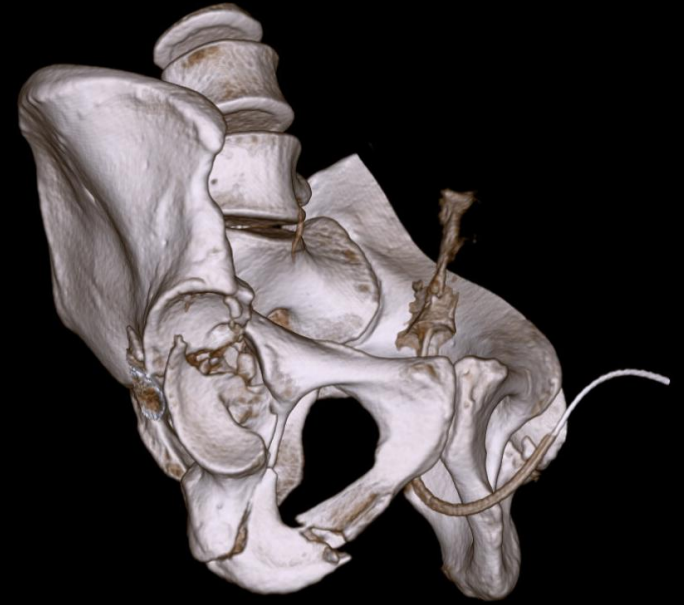
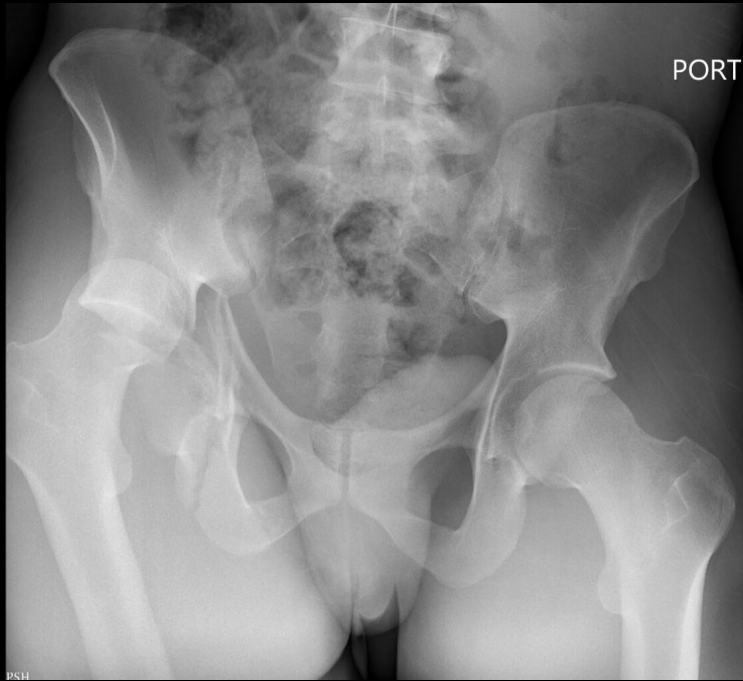
# 31-year-old PSA, found down and altered



Friday night  
11pm

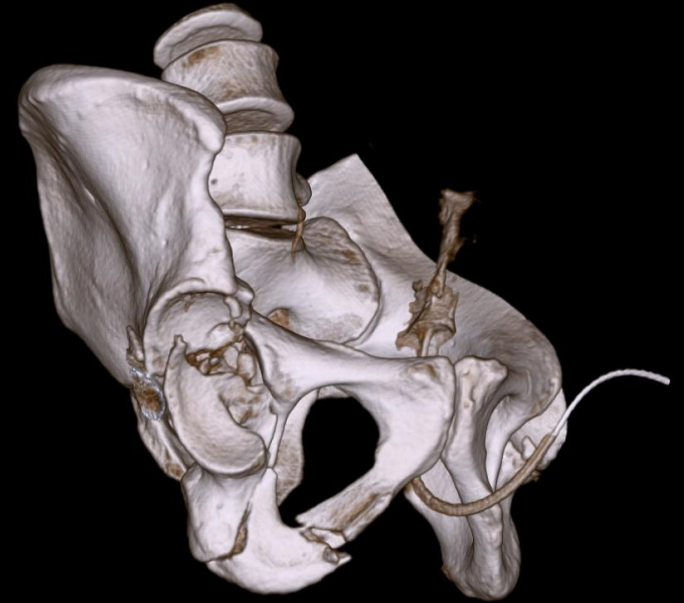
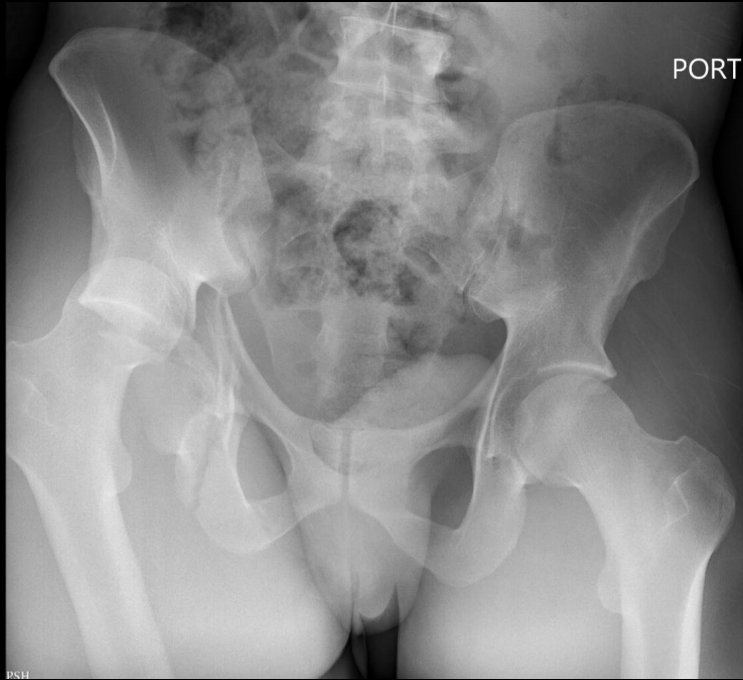
# CT Scan





Describe this injury

---



Initial management?

---

2:30 AM – after first reduction attempt



5AM Saturday – after second reduction attempt



Reduced???

Nope...

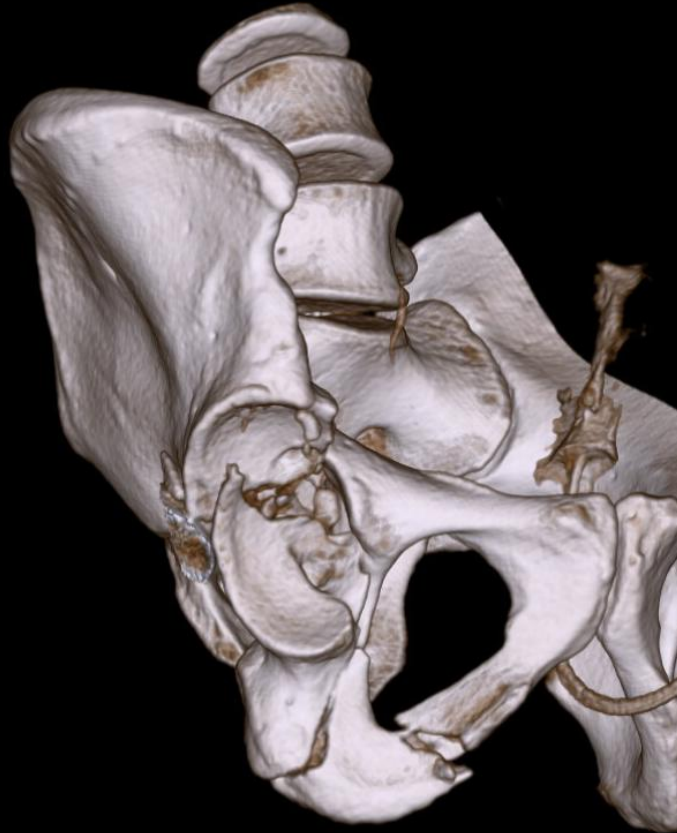


# 10AM Saturday – 3rd Attempted Reduction

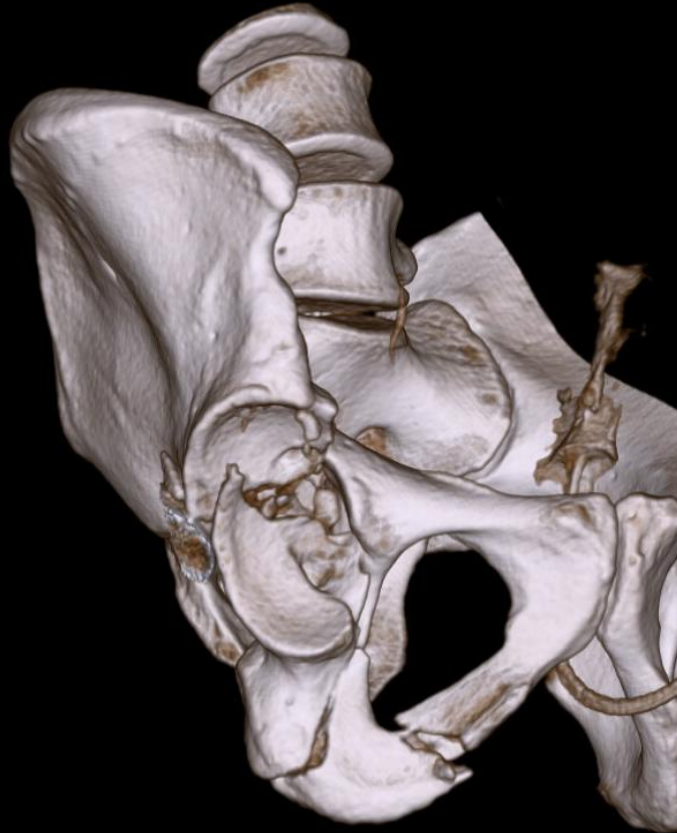


Reduced? Next steps

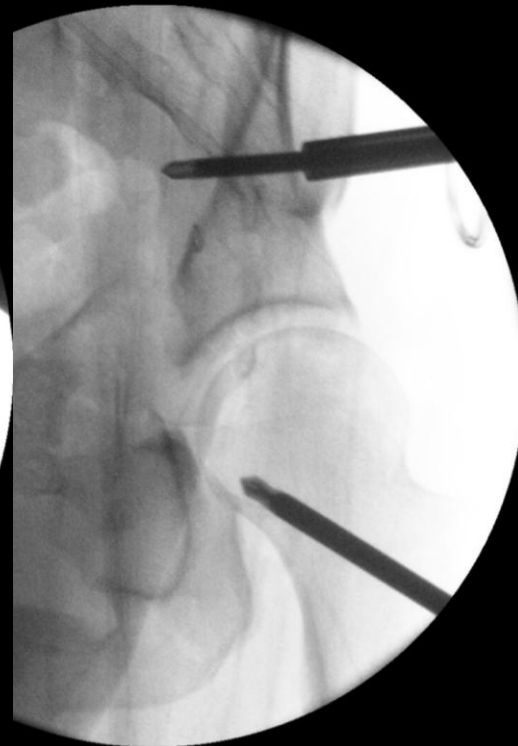
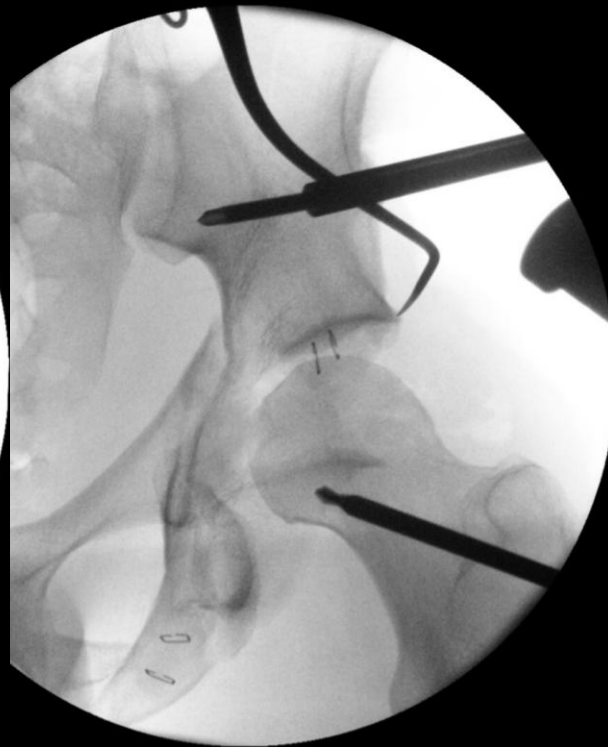
# Monday – Surgical tactic?



# Monday – Surgical tactic?



# 1<sup>st</sup> Stage ORIF (Prone KL)



# 1<sup>st</sup> Stage ORIF (Prone KL)



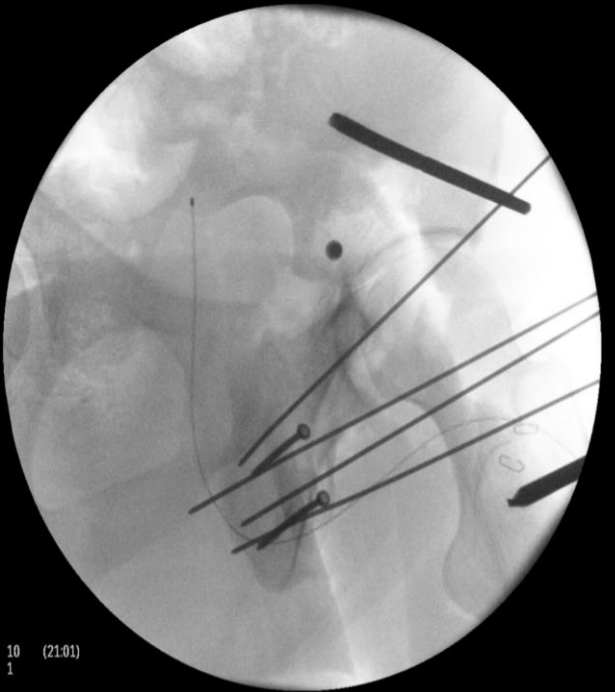
11 (21:10)  
1



12 (22:09)  
1

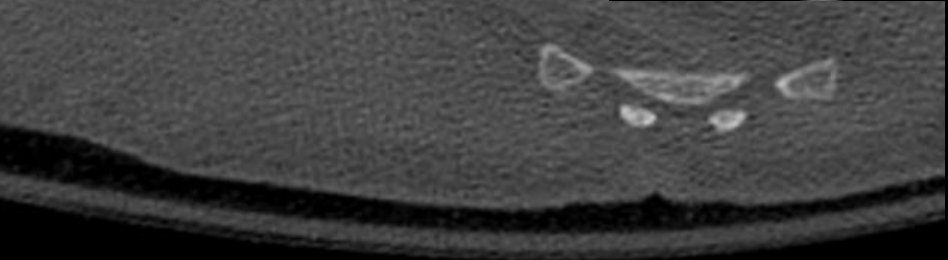
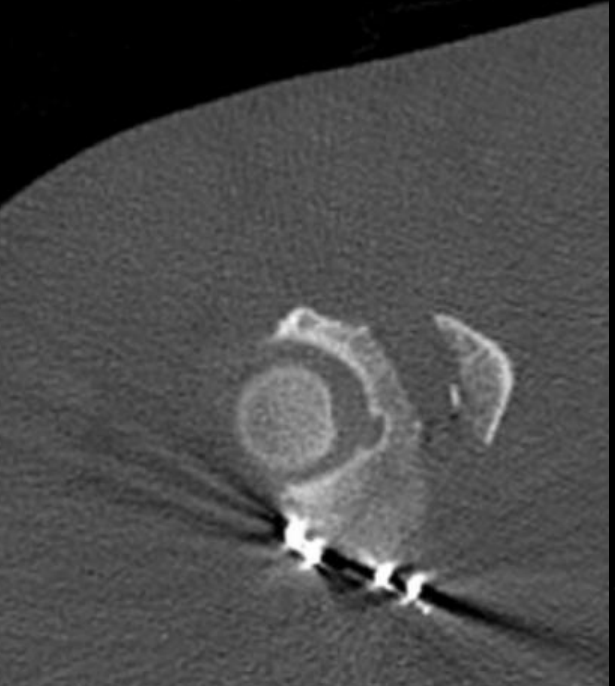


14 (22:11)  
1



10 (21:01)  
1

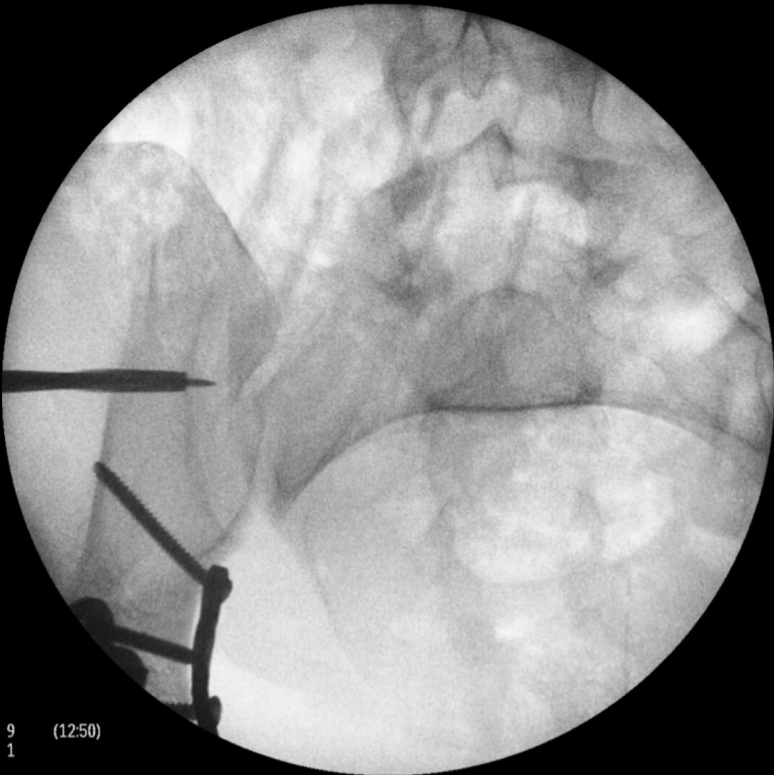
# Stage 1 result



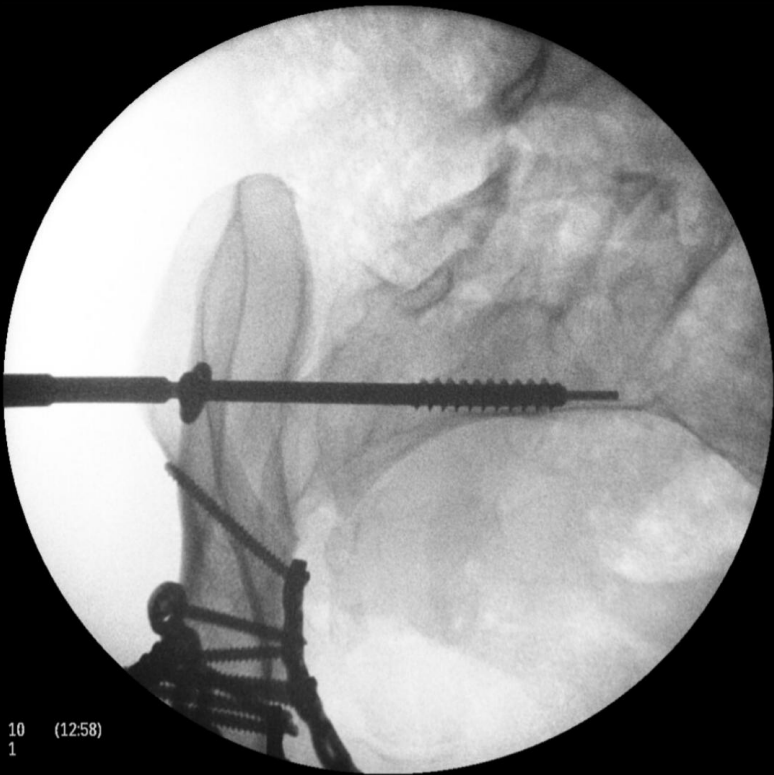
# Thursday - 2<sup>nd</sup> stage anterior with CRPP SIJ



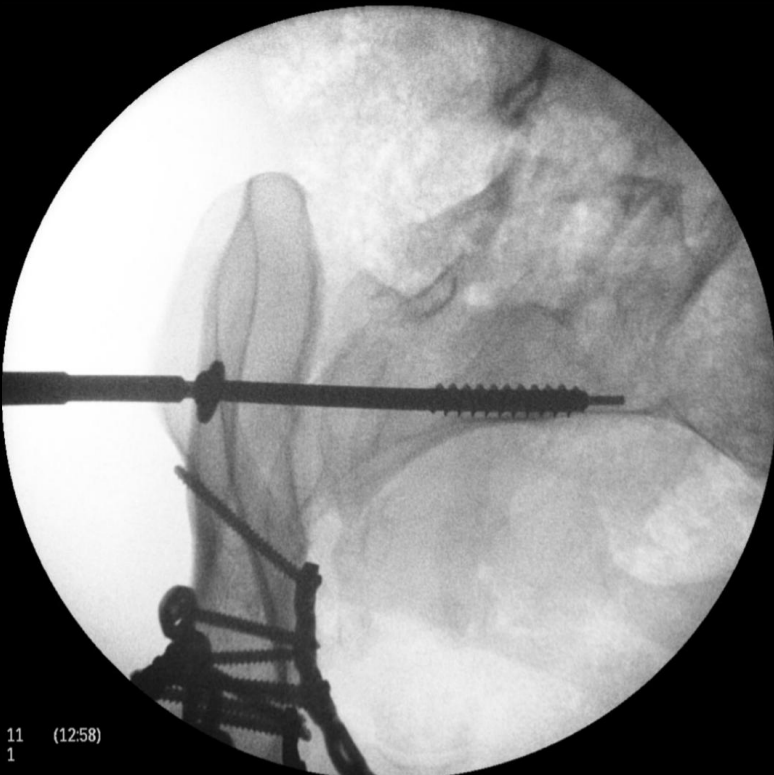
# Thursday - 2<sup>nd</sup> stage anterior with CRPP SIJ



9 (12:50)  
1

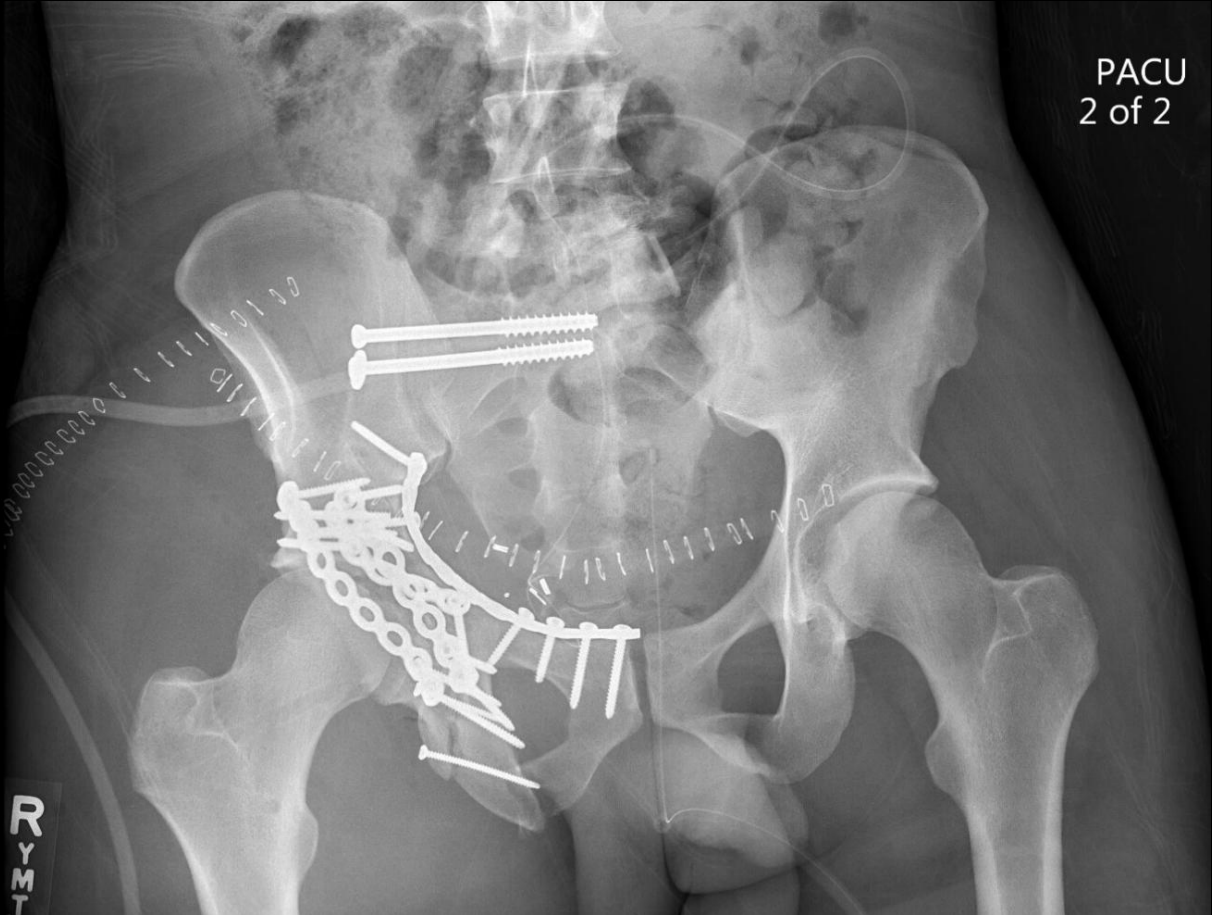


10 (12:58)  
1



11 (12:58)  
1

# Thursday - 2<sup>nd</sup> stage anterior with CRPP SIJ



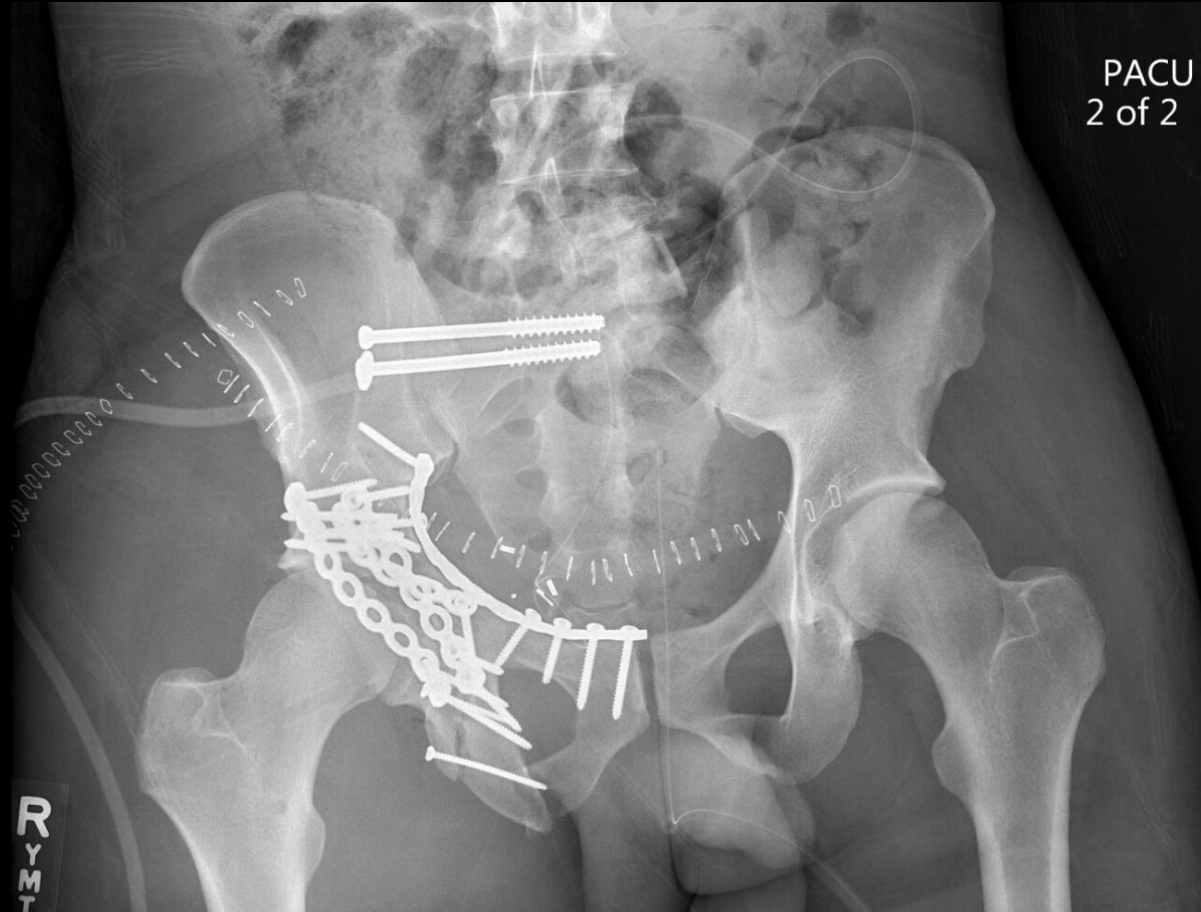
# Post-op CT



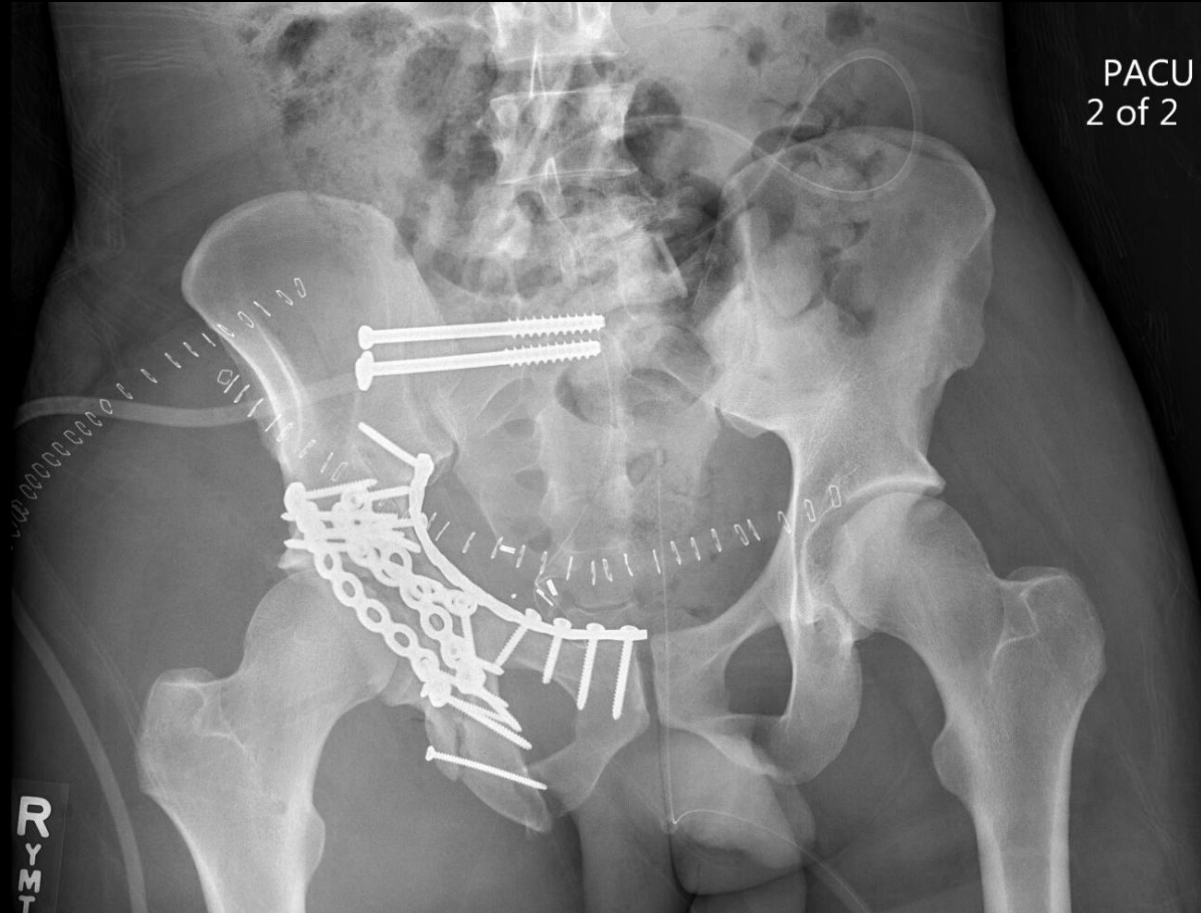
# Post-op CT



# Post-op precautions, prophylaxis???

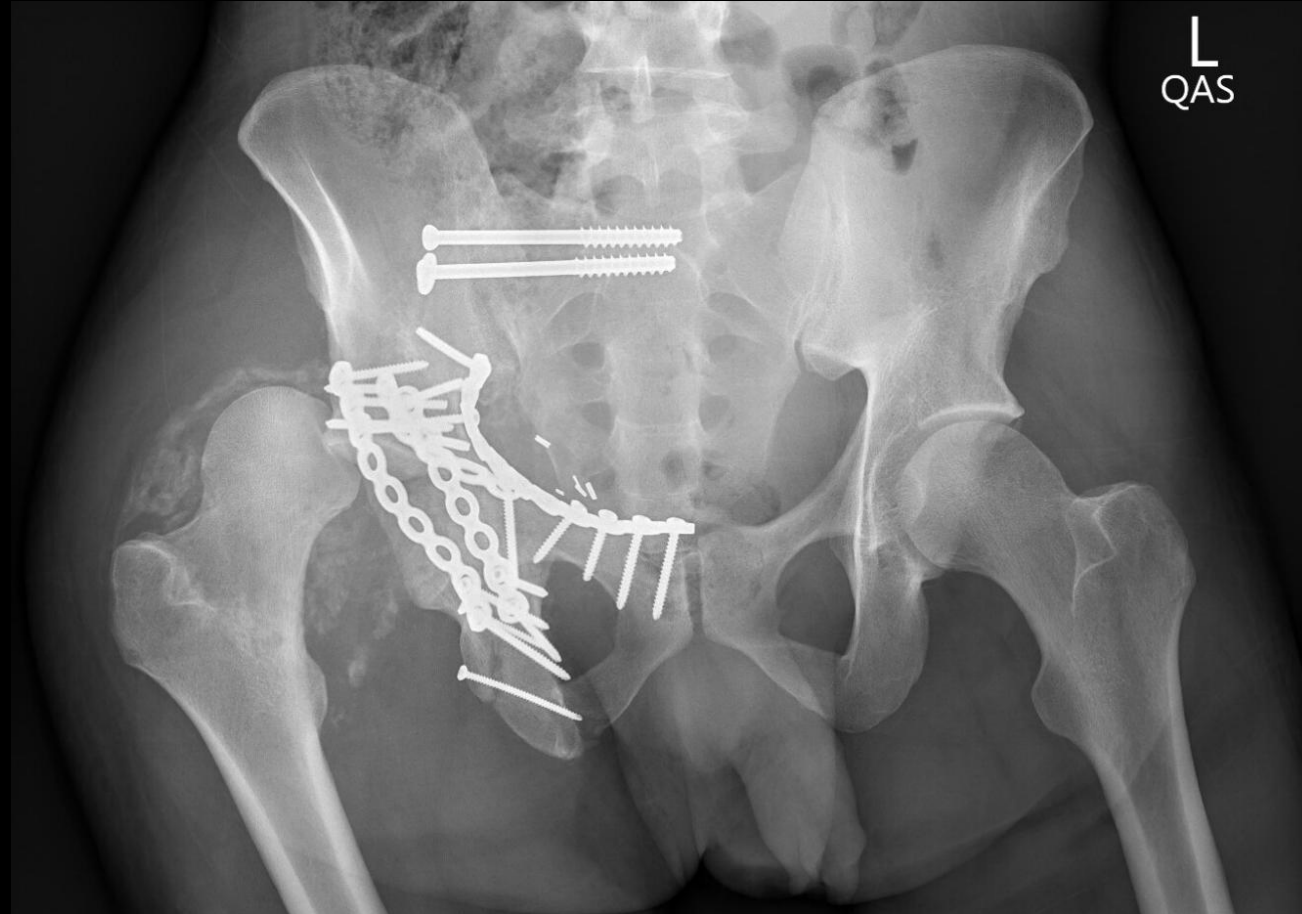


# Post-op precautions, prophylaxis???

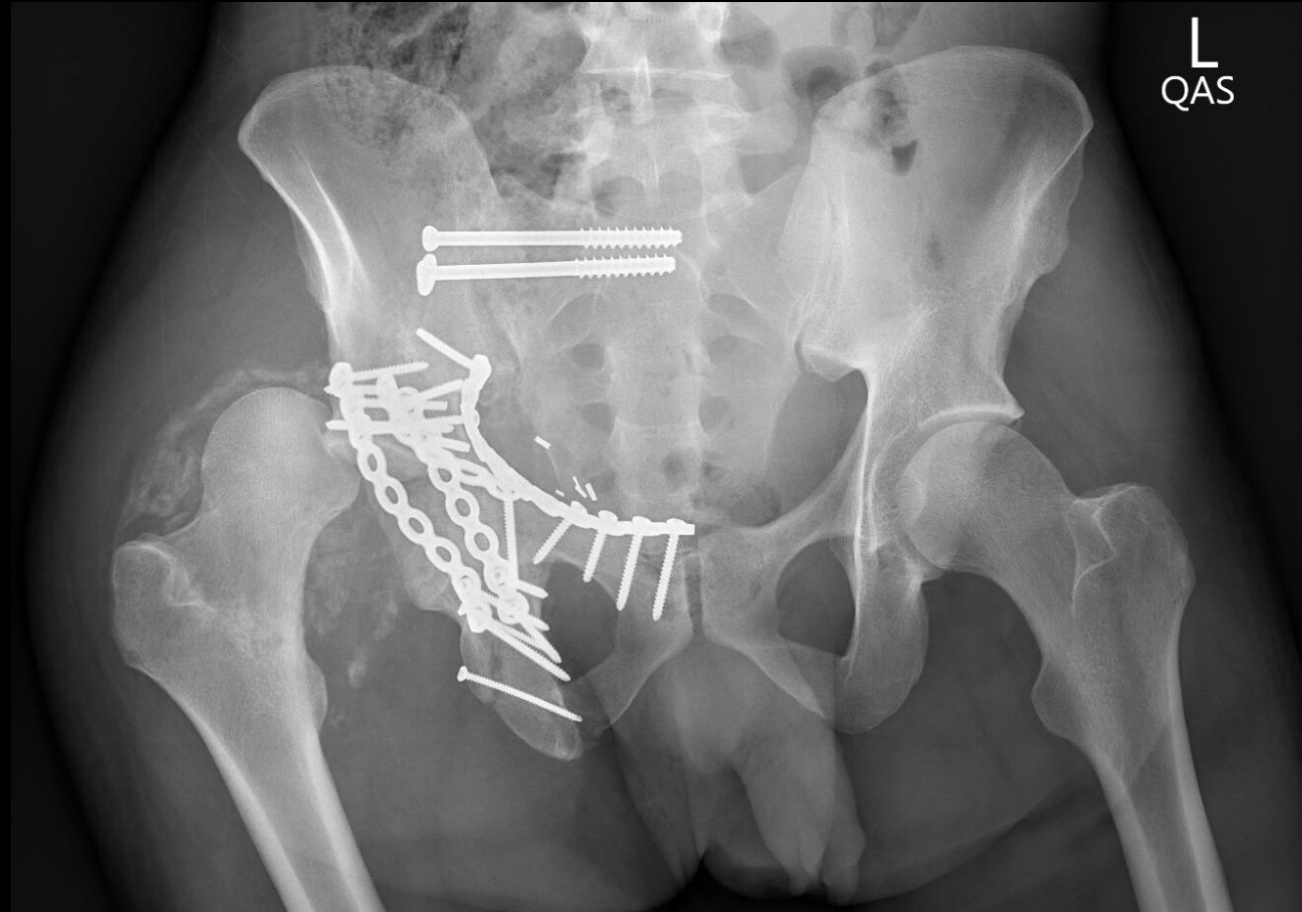


3.5 weeks post-op – left SNF and found  
intoxicated complaining of some hip pain . . .

3.5 weeks post-op – left SNF and found intoxicated complaining of some hip pain . . .



Next steps?



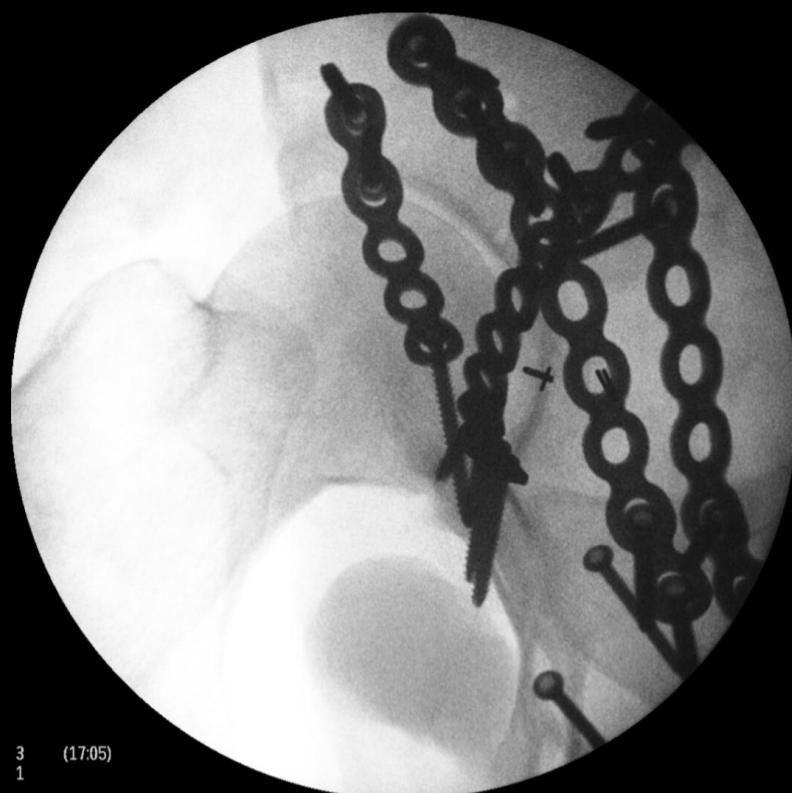
# Closed reduction



6  
1 (17:09)

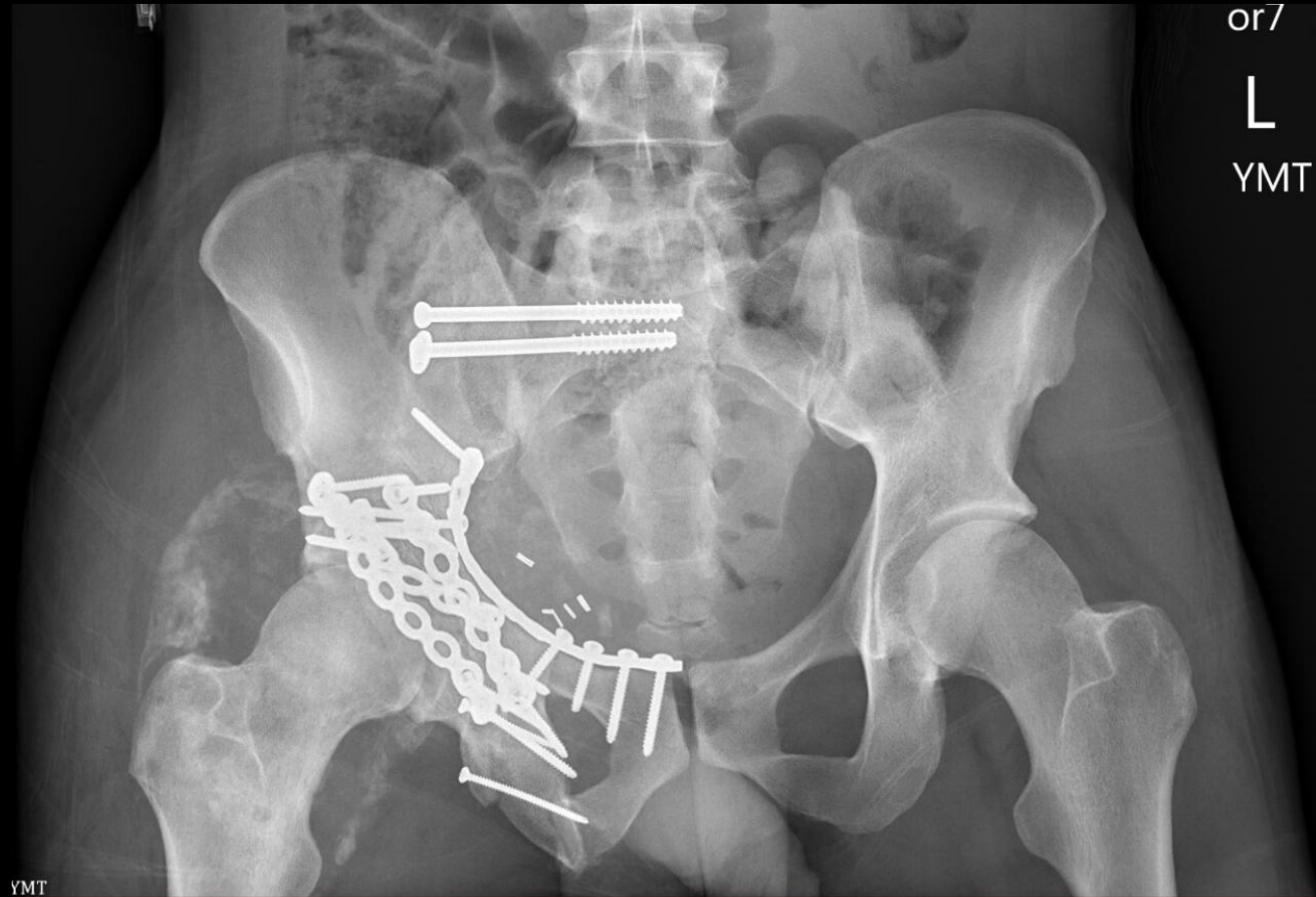


7  
1 (17:09)

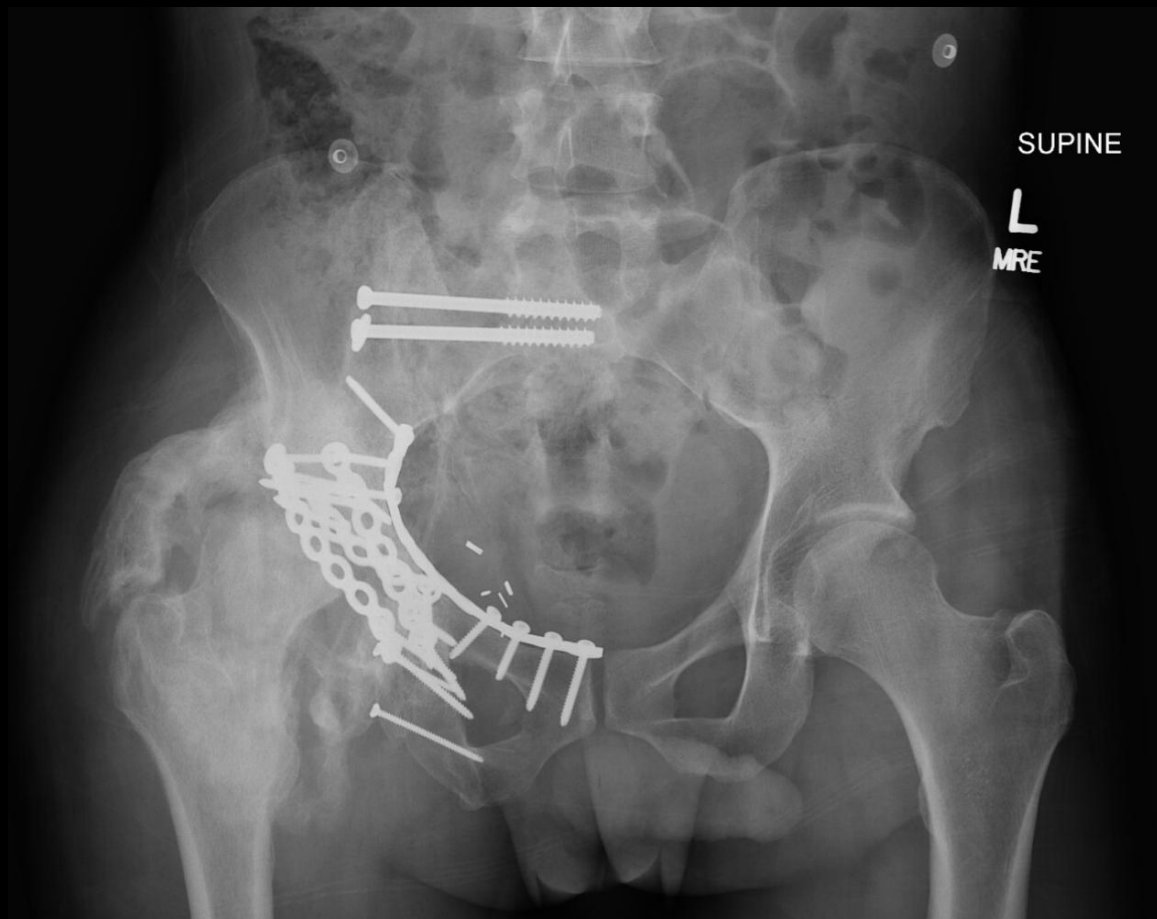


3  
1 (17:05)

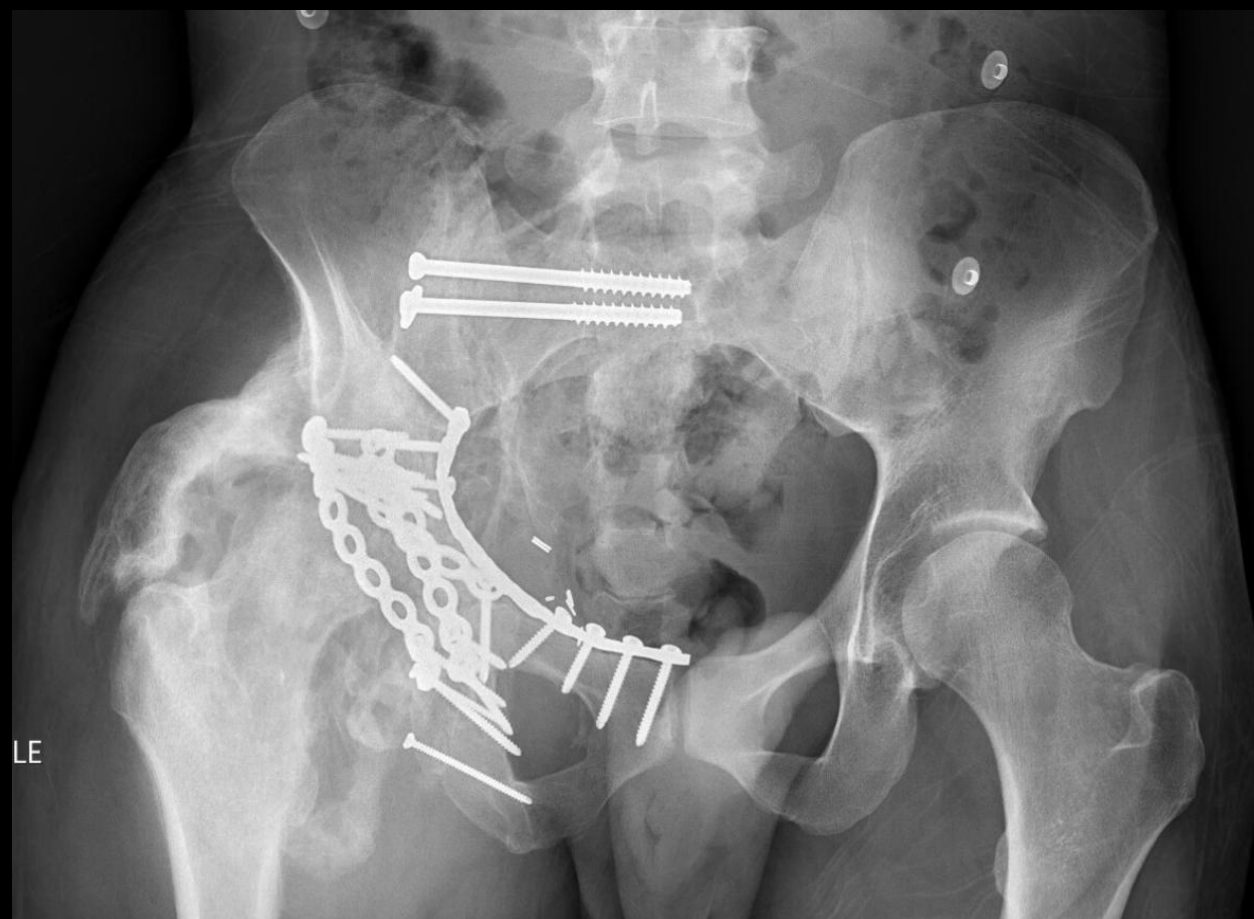
# Reduction and traction for 6 weeks



# Long-term



6 months



12 months

# For discussion:

- Appropriate initial management?
- Timing of initial management?
- Could the weekend team have done anything differently?
- Surgical tactic appropriate?
- Initial post-op care?
- Other salvage measures, next steps or wisdom in managing high-risk patients with psychosocial challenges?