

Case Presentations: Femoral Neck Fractures

Andrew H. Schmidt, M.D.
Hennepin County Medical Center
University of Minnesota



Case 1: 50 yo male

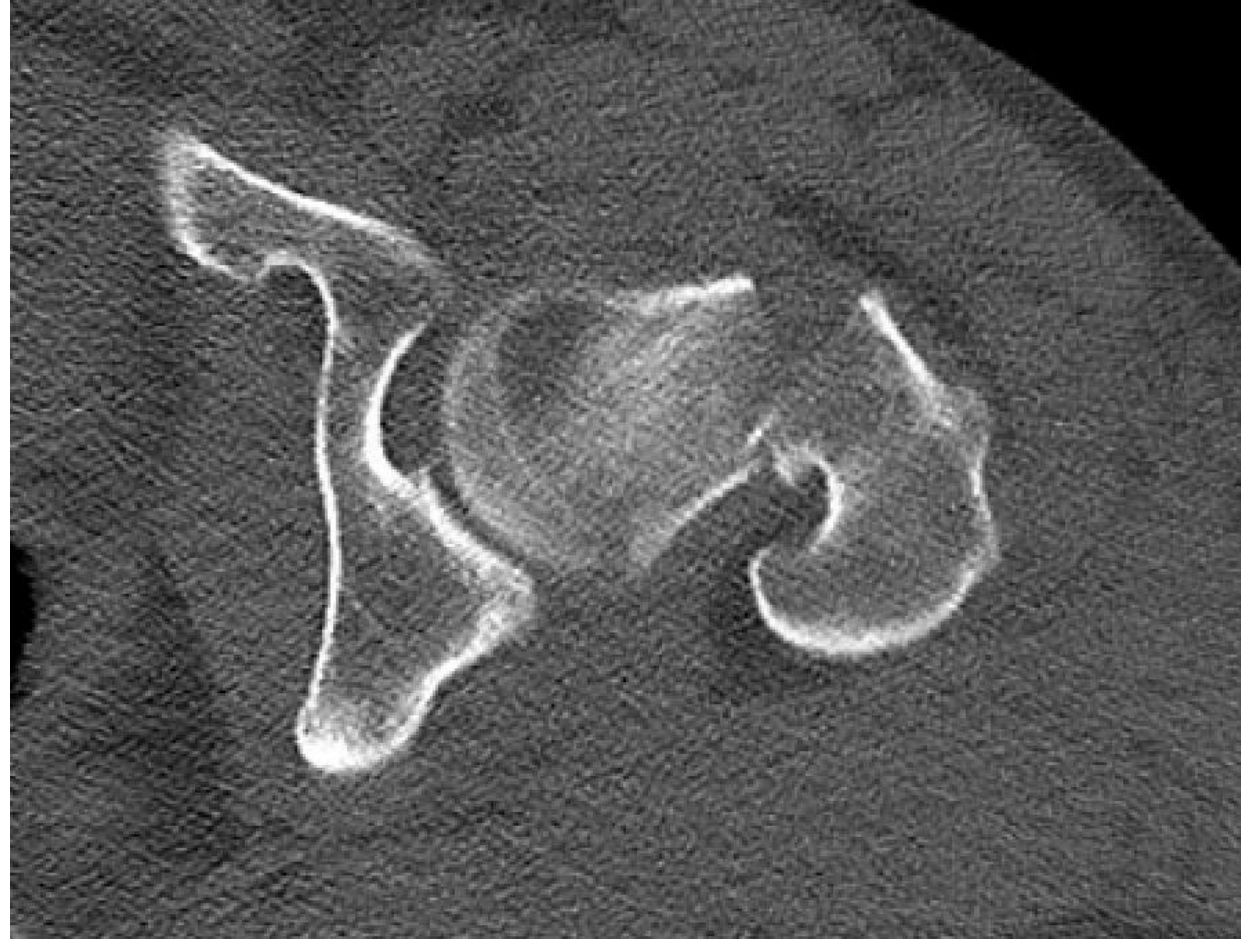
- Fell at a homeless shelter while standing on a chair w/ wheels trying to fix an “exit sign”
- Hx methamphetamine use
- Housing insecurity
- Left hip pain



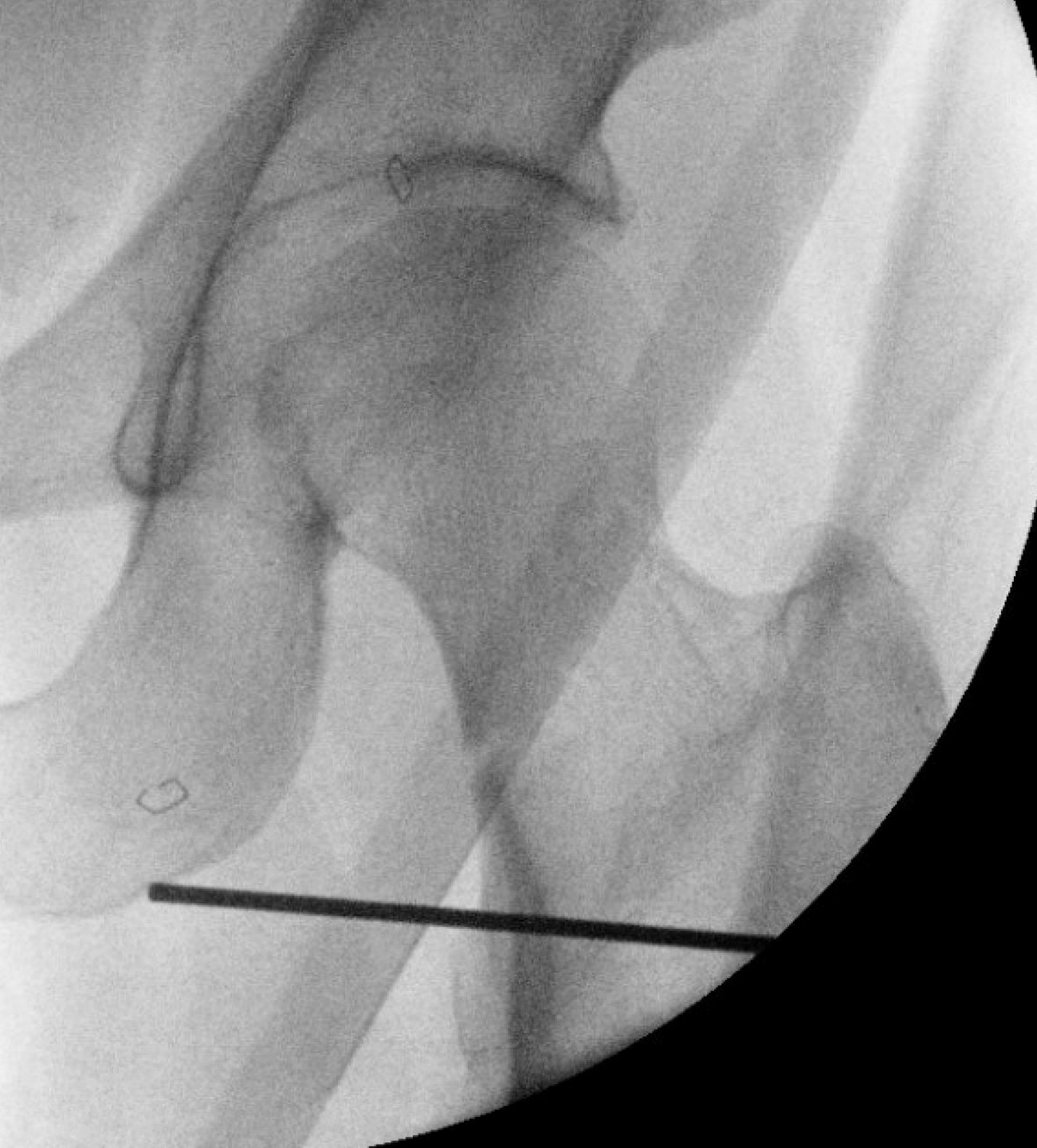


Discussion

Enough information for decision – making?



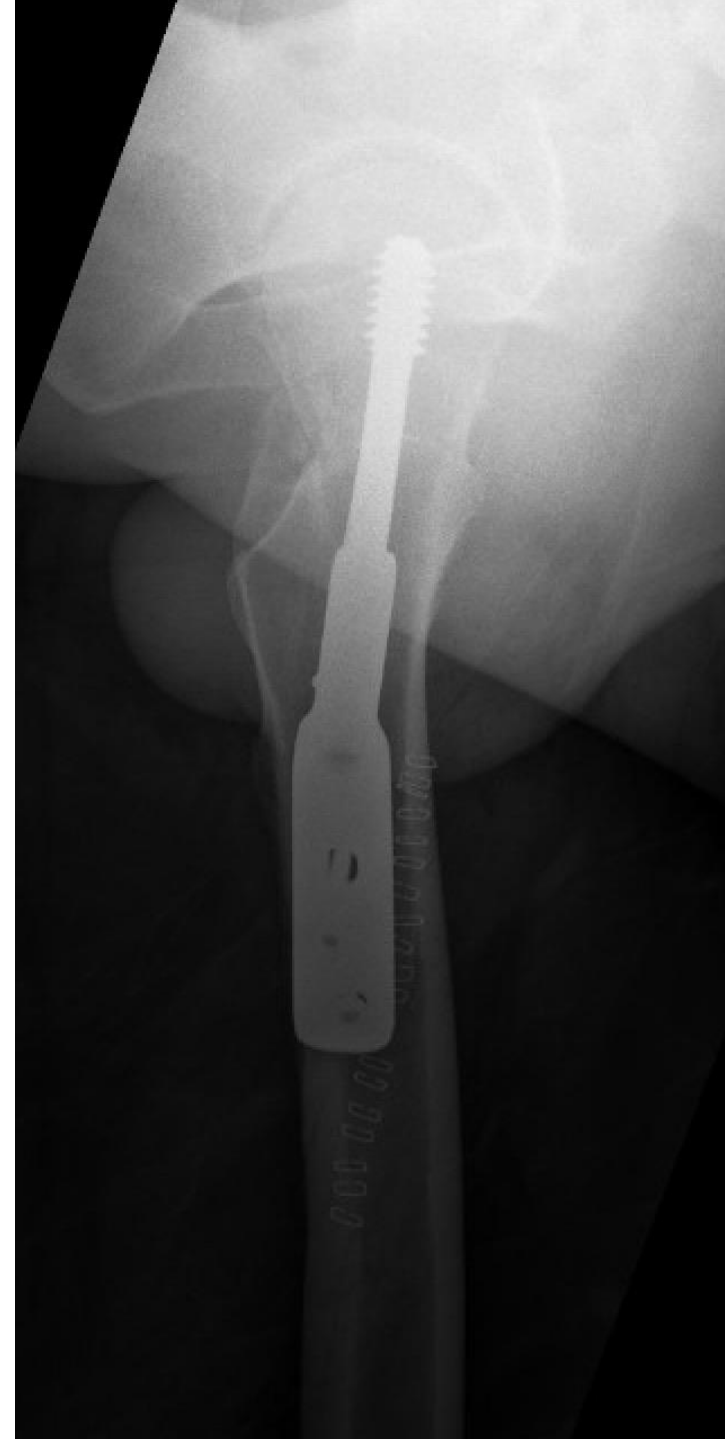
Discussion – Plan?



L
Supi



Immed postop







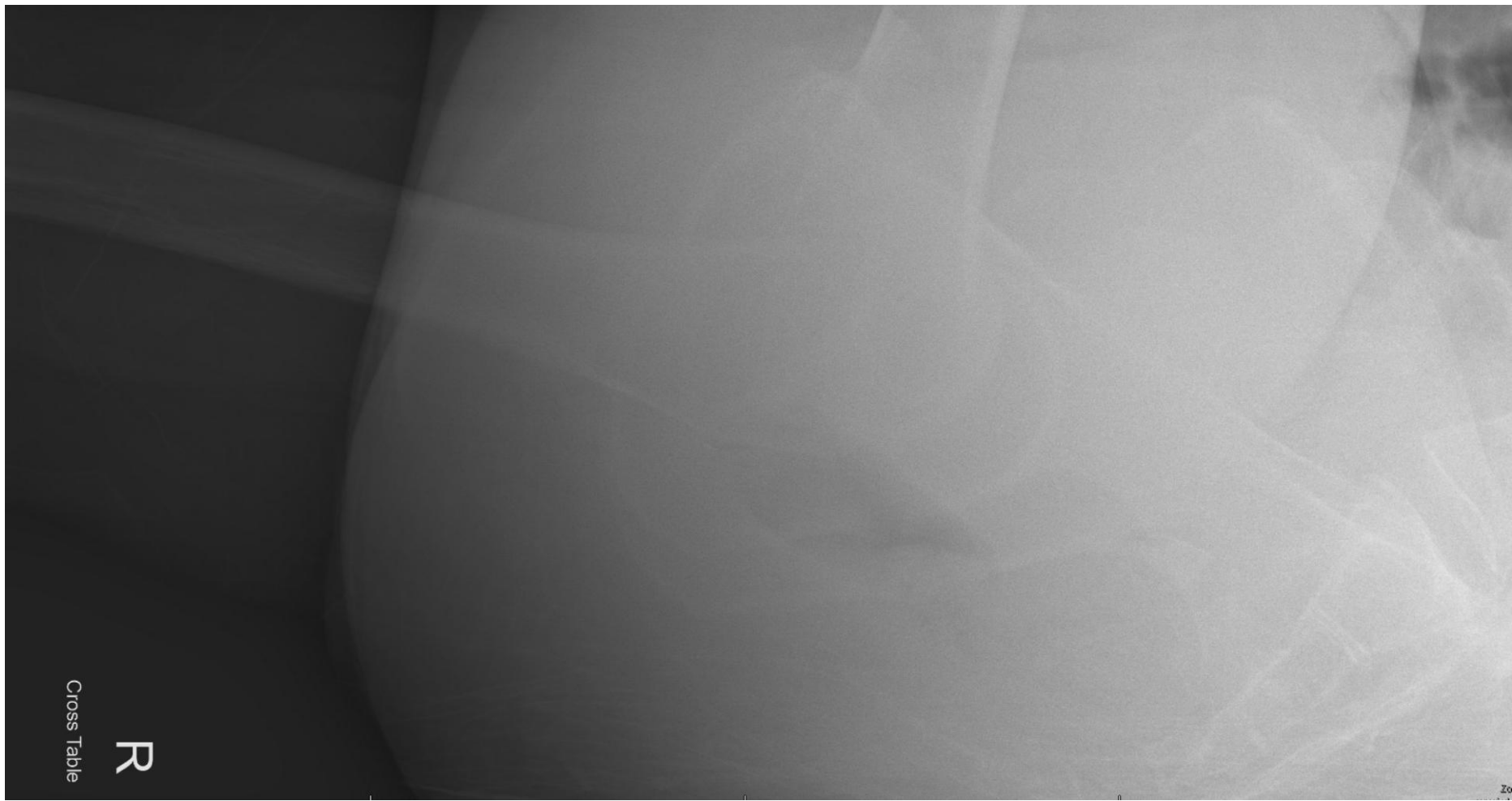
"Serendipity CT 4 months postop"

Discussion

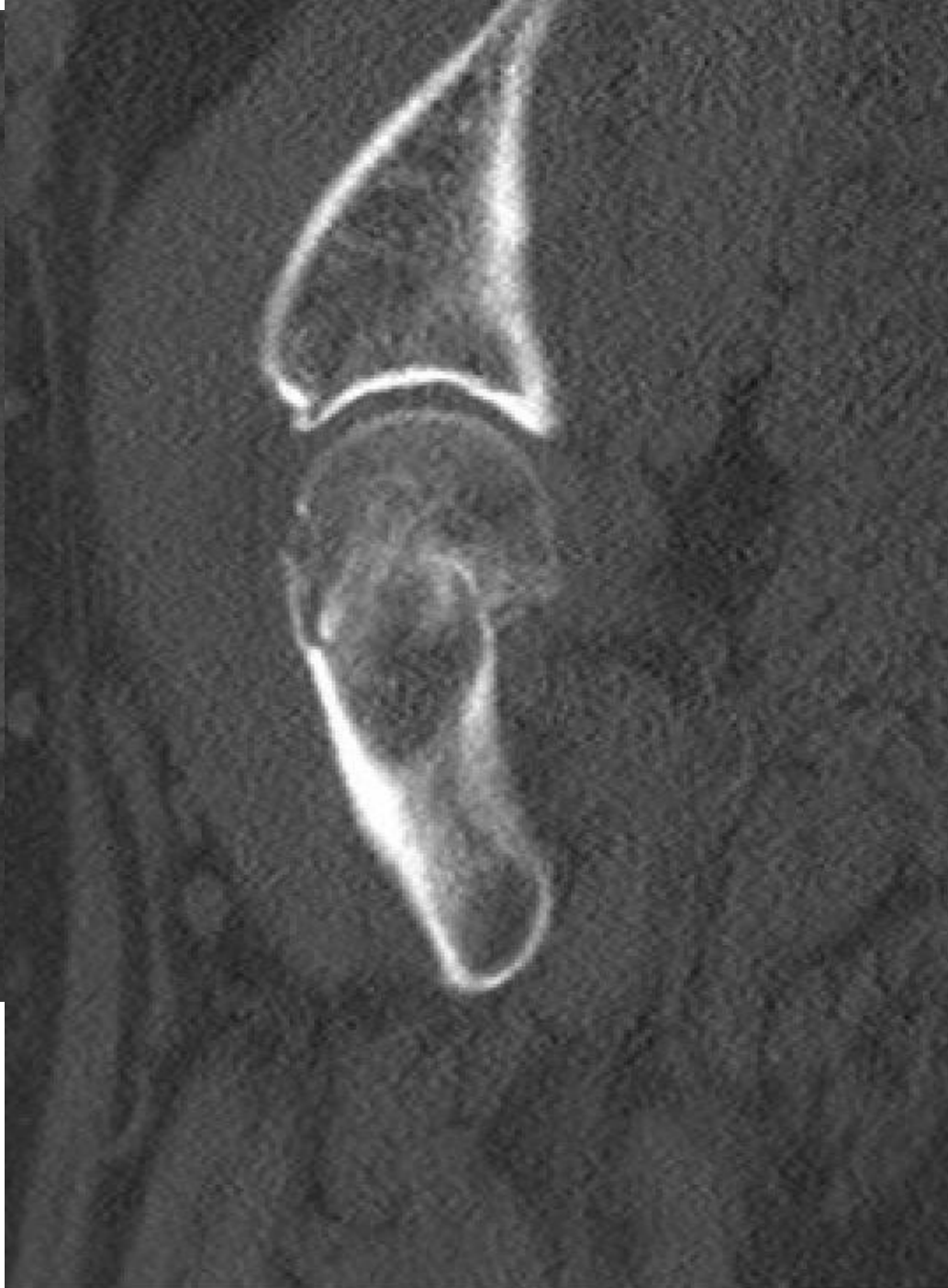
Case 2: 65 yo female

- Fell from step ladder at her home
- Works as attorney, type I diabetes
 - Uses insulin pump, maintains HbA1c around 6.
 - Walk 3-5 miles several times a week





Discussion



More discussion ?

