



**Montefiore**  
THE UNIVERSITY HOSPITAL

**EINSTEIN**  
Albert Einstein College of Medicine  
OF YESHIVA UNIVERSITY

## Ask the Experts: Rapid Fire Revision Knee Cases

Jeff Barry MD

Claudio Diaz MD

Craig Hogan MD

Carlos Higuera Rueda MD

**Eli Kamara, MD FAAOS FAOA**

Assistant Professor of Orthopaedic Surgery

Division of Adult Reconstruction

Albert Einstein College of Medicine

Montefiore Medical Center

[Ekamara@Montefiore.org](mailto:Ekamara@Montefiore.org)

**I have nothing to disclose.**

Detailed disclosure information is available via:

AAOS Disclosure Program on the AAOS website at

# Outline

Revision philosophy

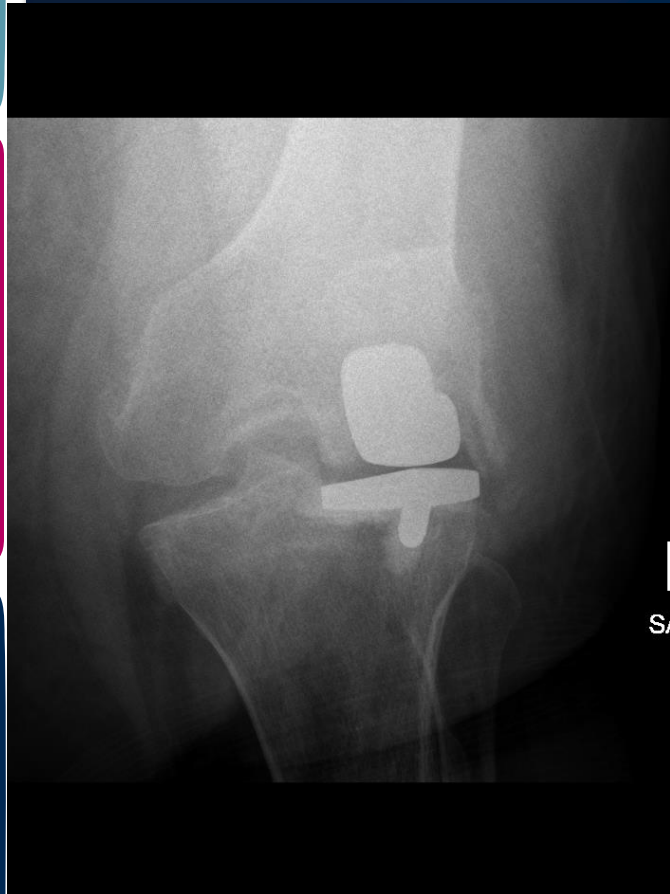
Arthrofibrosis

Asceptic loosening with extensive bone loss

Extensor mechanism

Infected revision TKA

# Revision Philosophy #1



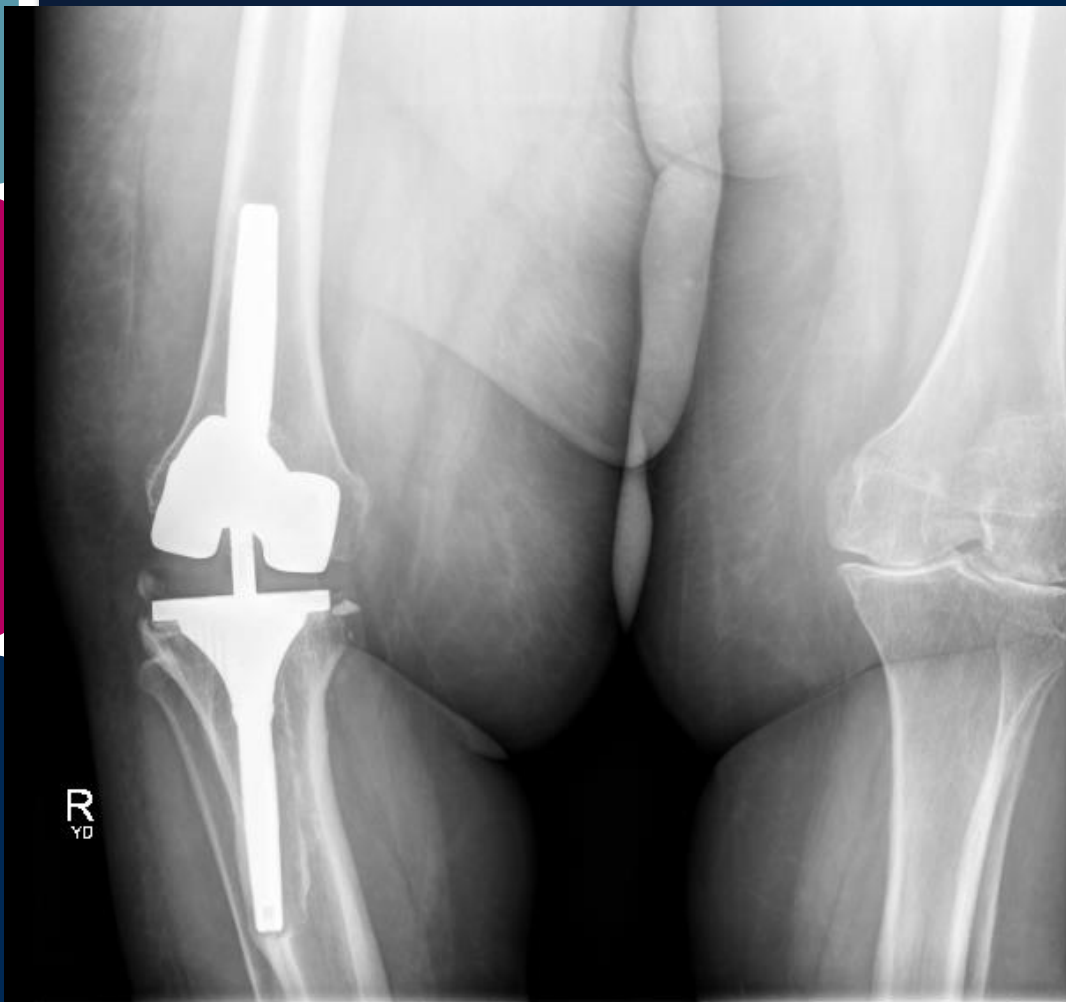
# Revision Philosophy #1

- Zone of fixation
- Type of fixation: cemented, cementless
- Level of constraint



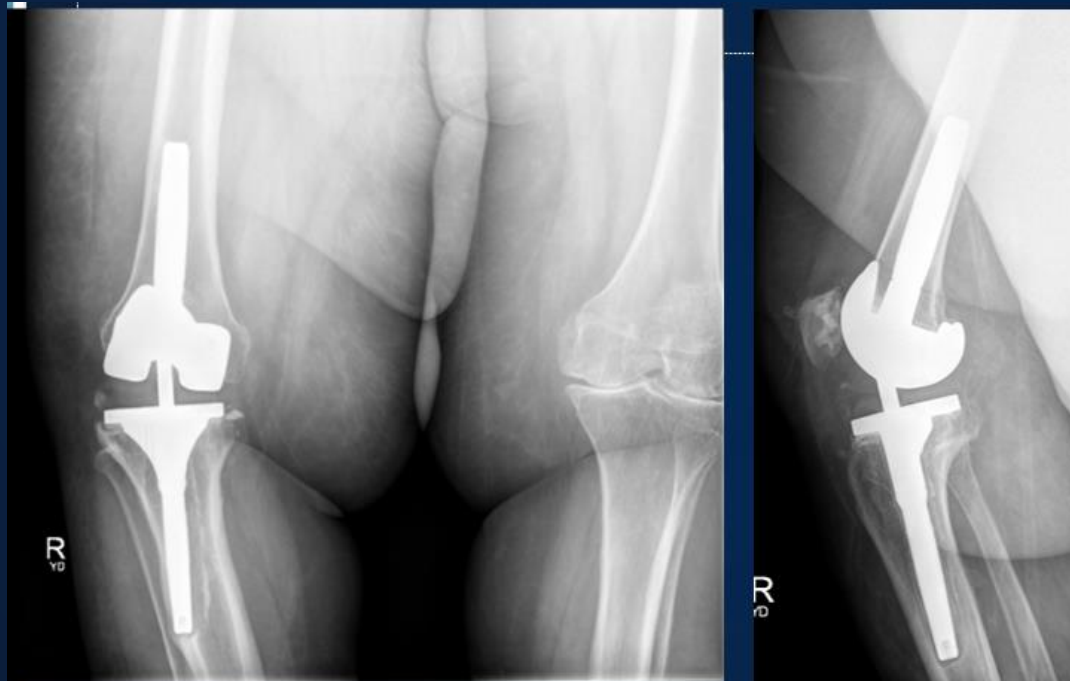


# Revision Philosophy #2



# Revision Philosophy #2

- Zone of fixation
- Type of fixation: cemented, cementless
- Level of constraint





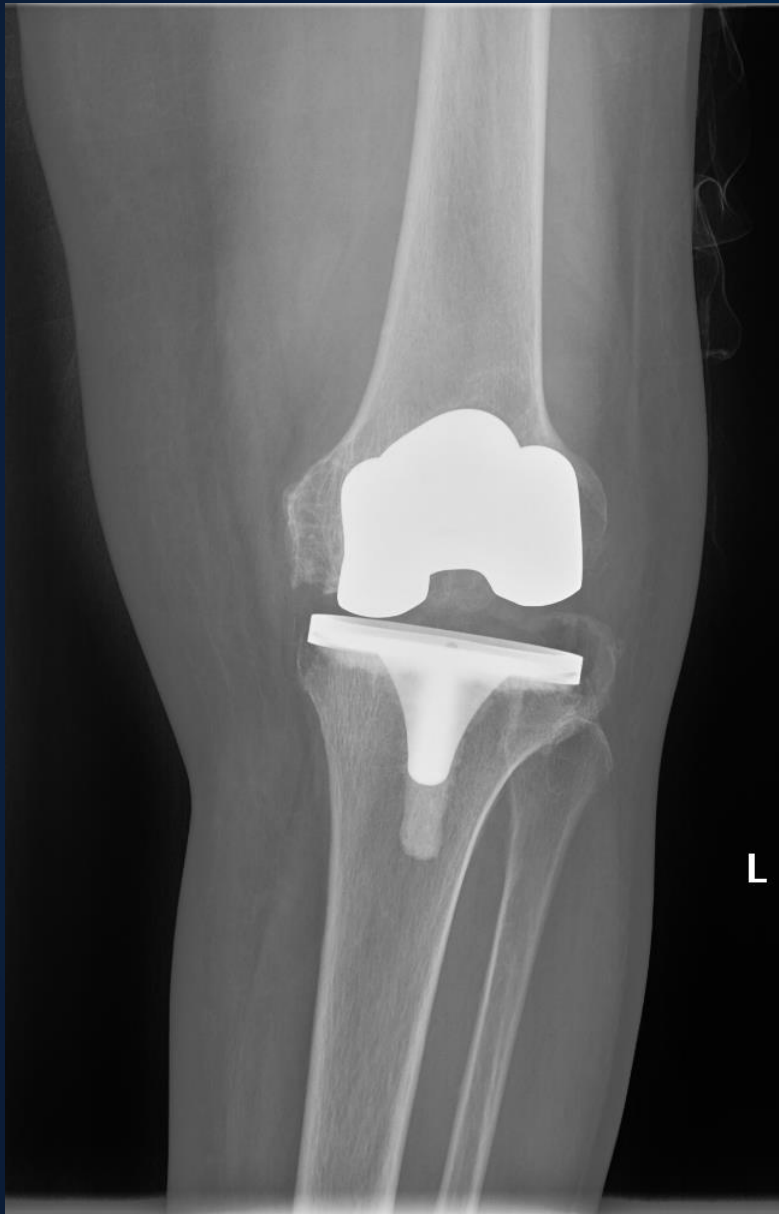


THE UNIVERSITY HOSPITAL



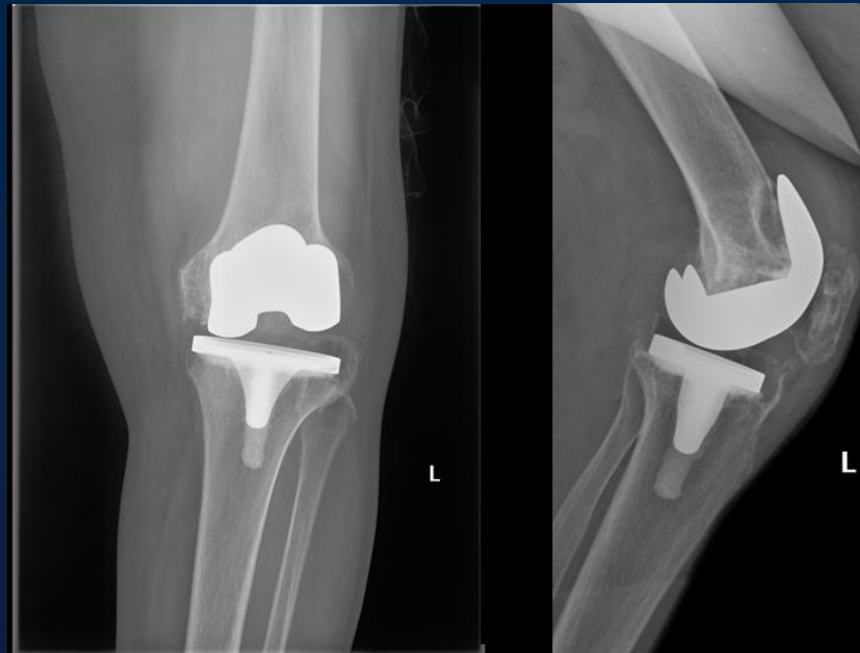
Albert Einstein College of Medicine  
OF YESHIVA UNIVERSITY

# Revision Philosophy #3



# Revision Philosophy #3

- Zone of fixation
- Type of fixation: cemented, cementless
- Level of constraint





# Revision Philosophy #4



# Revision Philosophy #4

- Zone of fixation
- Type of fixation: cemented, cementless
- Level of constraint





# Arthrofibrosis

- 2 years
- Popliteal artery injury
- ROM 20-70





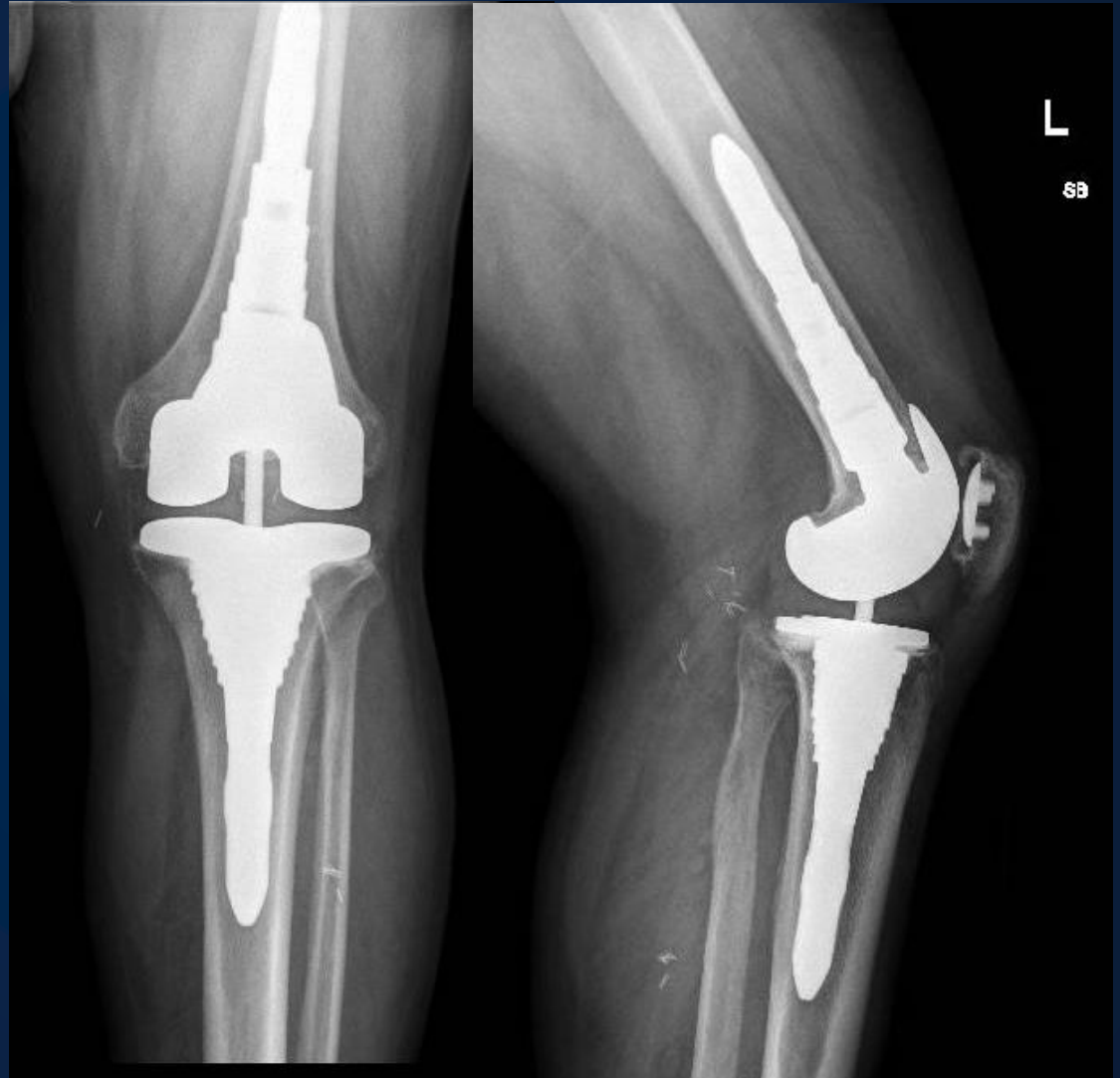
# Arthrofibrosis

- Decision for surgery
- Preop radiation
- Post operative medications



# Arthrofibrosis

- Intra-op
  - 0-110
- 3 months
  - 0-100
- 2 years
  - 20-70



# Extensive Bone Loss

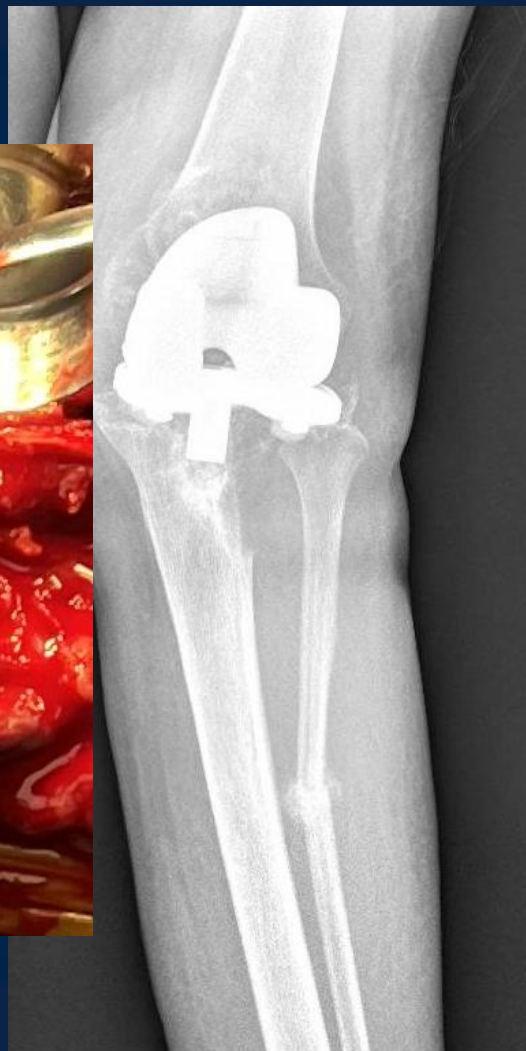
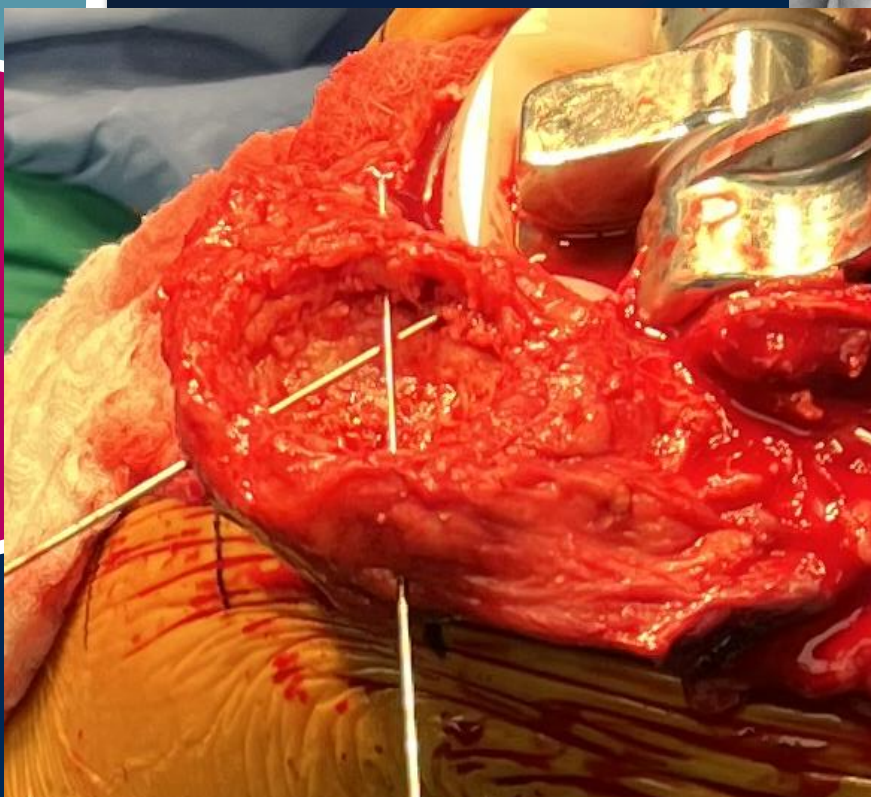


# Extensive Bone Loss

- Zone of fixation
- Fibula fixation
- Mega prosthesis
- Intraop:
  - Patella button pops off leaving egg shell



# Extensive Bone Loss







# Extensor Mechanism

- Chronic patellar tendon rupture
- ROM
  - 70-100 active
  - 0-120 passive



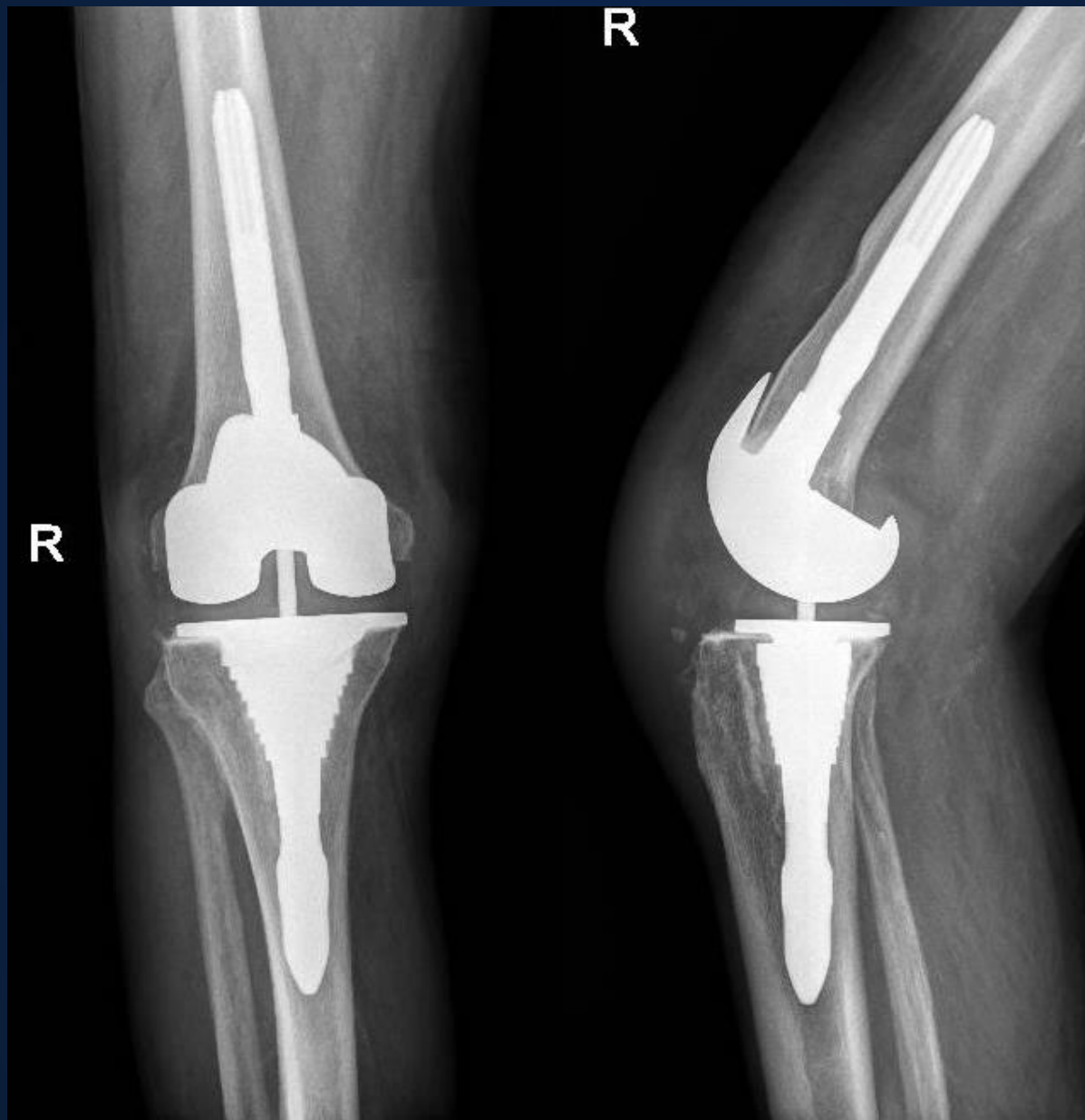


# Extensor Mechanism

- Allograft
- Synthetic mesh
- Patella
- Level of constraint
- Post op restrictions

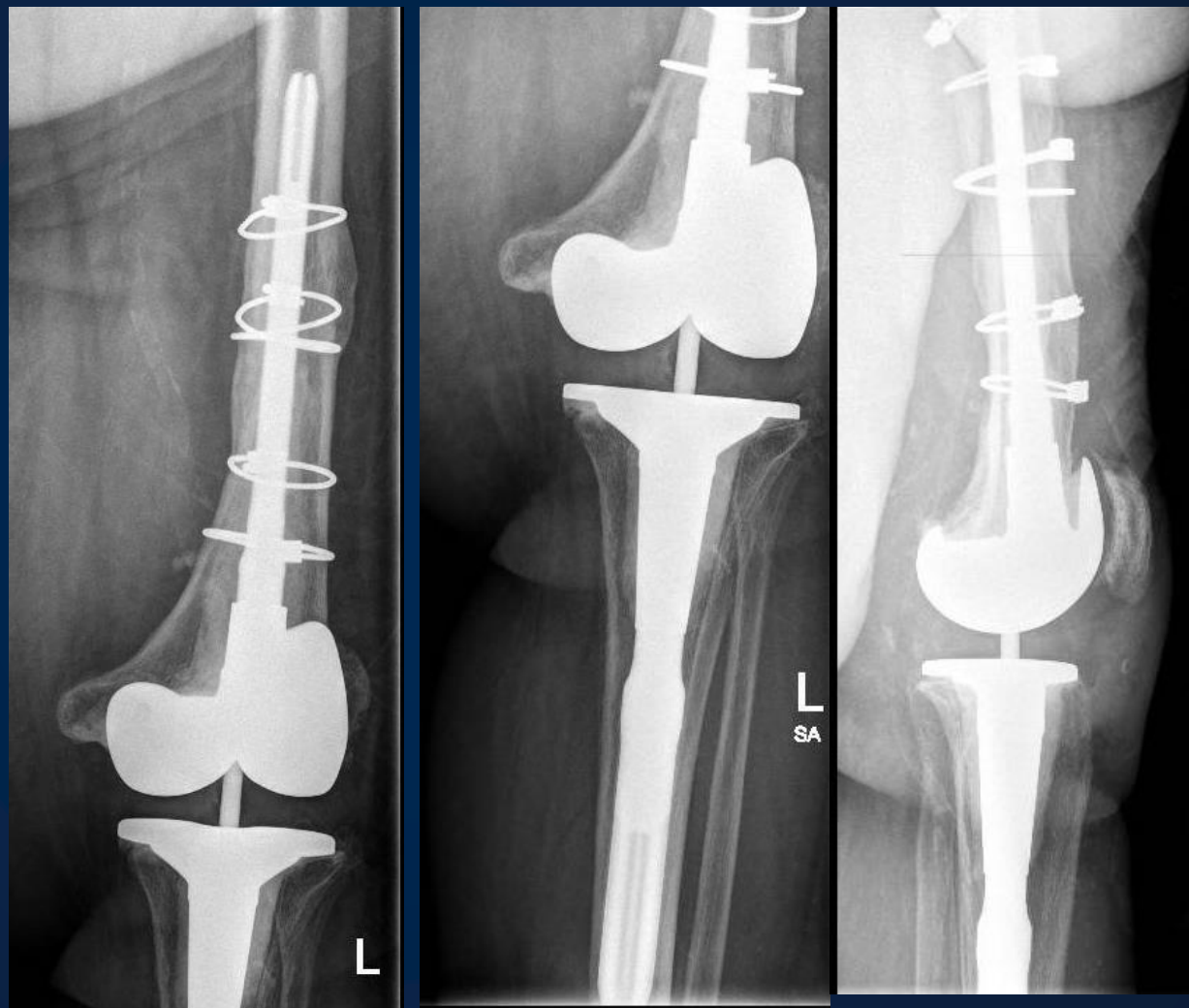


# Extensor Mechanism



# Infected revision TKA

- Revision exposure
- Cables
- Antibiotics



# Infected revision TKA





**Montefiore**  
THE UNIVERSITY HOSPITAL

**EINSTEIN**  
Albert Einstein College of Medicine  
OF YESHIVA UNIVERSITY

## Ask the Experts: Rapid Fire Revision Knee Cases

Jeff Barry MD

Claudio Diaz MD

Craig Hogan MD

Carlos Higuera Rueda MD

**Eli Kamara, MD FAAOS FAOA**

Assistant Professor of Orthopaedic Surgery

Division of Adult Reconstruction

Albert Einstein College of Medicine

Montefiore Medical Center

[Ekamara@Montefiore.org](mailto:Ekamara@Montefiore.org)