



Glenoid & Scapula Fxs

Approaches

Utku KANDEMIR, MD

Professor

Dept of Orthopaedic Surgery

University of California, San Francisco



Surgical Approaches

□ ANTERIOR

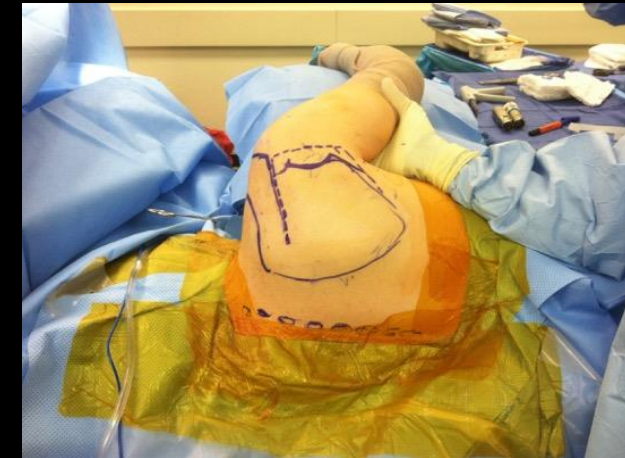
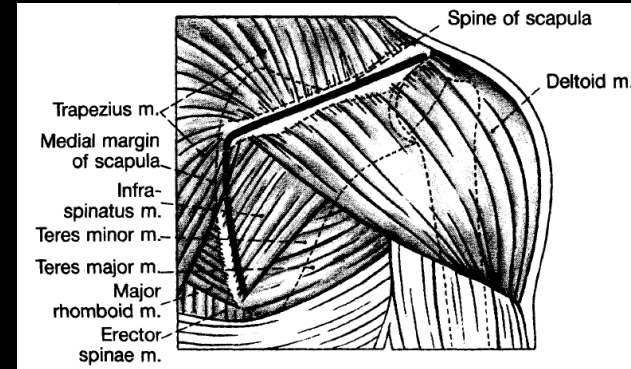
- Deltopectoral

□ POSTERIOR

- Judet (Extensile)
- Modified Judet
- Limited /MIS

□ COMBINED

Judet R. Acta Ortho Belgica 1964



Surgical Approaches: POSITION

□ ANTERIOR

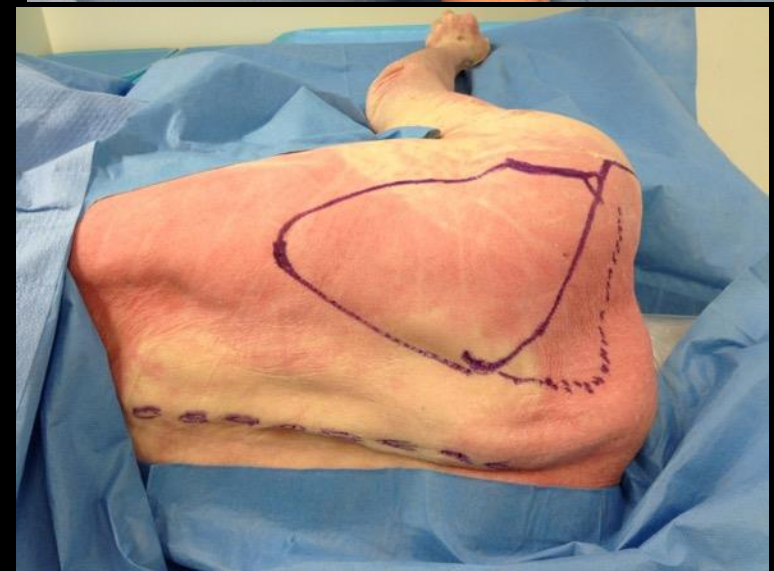
- Beach chair

- Supine

□ POSTERIOR

- Lateral decubitus

- Prone



Posterior Approach

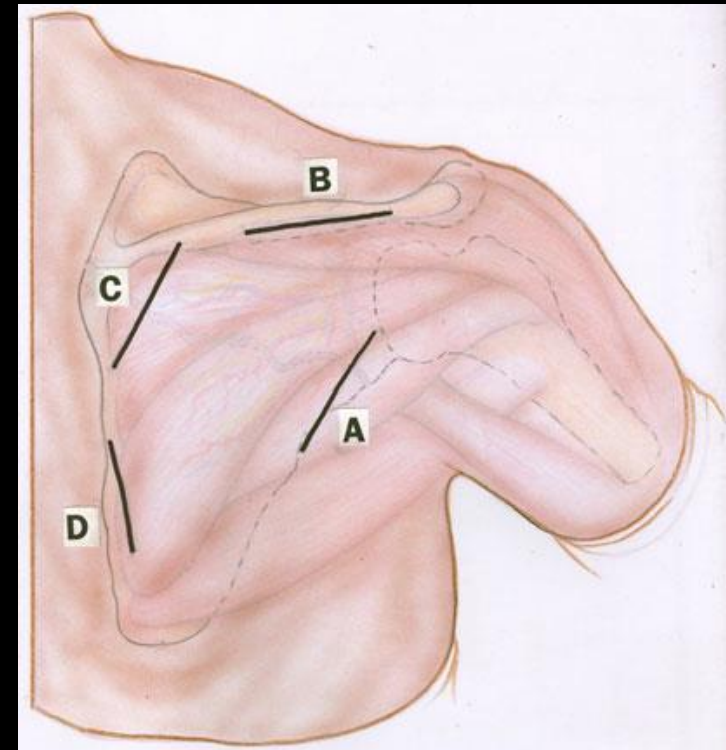
Utku Kandemir, MD ©

Scapula : Posterior Approach

Utku Kandemir, MD

Limited Approach: Indications

- Scapular body, Simple fracture patterns
- Within a week of injury
- Posterior glenoid



Limited Approach: Advantages

- Minimize
 - Subcutaneous flaps
 - Disruption of post musculature
- No need of post deltoid detachment
- Less scar (skin, deeper layers)
- Early Rehab/ Quicker Recovery



Limited Posterior Approach

Deltopectoral Approach

Utku Kandemir, MD ©

THANK YOU



Utku.Kandemir@ucsf.edu

